

1 STATIONS

The following can be connected to the telephone system:

- single line stations
- stations 901
- ns 902
- ns 903
- stations 904 (equipped with a one-line display)
- stations 905 (equipped with a two-line display)

1.1 station 901

This station is equipped with two function keys and eight programmable keys.

The "handsfree" function is not available on this station.

1.2 Station 902

This station is equipped with eight function keys and eight programmable keys.

The "handsfree" function is not available on this station (no incorporated microphone), but the group listening function is provided.

1.3 Station 903

This station is identical to station 904, except that it is not equipped with a display.

1.4 Station 904

This station is equipped with 13 function keys and 10 programmable keys.

It is fitted with a display and operates in the "hands-free" mode for internal and external calls.

1.5 Station 905

This station is equipped with 13 function keys and 10 programmable keys.

It is fitted with a two-line display (one line reserved for messages) and operates in the "hands-free" mode for internal and external calls.

1.6 Multiline station programmable keys

Each multiline station is equipped with 8 or 10 keys (depending on the station), the function of which can be programmed. The different features that can be assigned to these keys are described in the DE manual (program B41).

1.7 Particularities of stations 901 to 905

These stations can be operated in two ways for call reception:

- ★ Handset off-hook: in this case, the station operates as a single line station (automatic connection to internal or external correspondent) the station is called as "single line".
- ★ Handset off-hook and depression of the key corresponding to the flashing light the station operates as a "multiline" station.

Remarks:

These two operating modes are defined by special programming (refer to the DE manual, program B37). They are described in the various chapters of this manual.

1.8 Single line stations

These are stations regularly used behind a telephone system.

Distinction is made between three types of single line station:

- decadic pulse stations (rotary or push button).
- DTMF station with 12-key keyboard.
- DTMF station with 16-key keyboard.

Remarks:

- If DTMF stations do not have a FLASH button, the user must depress the station cradle briefly for certain procedures.
- For purposes of simplification in the text of this manual, the different types of single line station are designated:
 - decadic station.
 - DTMF 12K station (12 keys).
 - DTMF 16K station (16 keys).
 - Flashing key or ground key: BS
 - Telephone hook: CC

CHAPTER 1**GENERAL**

	Page
1 STATIONS	1.3
1.1 station 901	1.3
1.2 Station 902	1.3
1.3 Station 903	1.3
1.4 Station 904	1.3
1.5 Station 905	1.3
1.6 Multiline station programmable keys	1.3
1.7 Particularities of stations 901 to 905	1.3
1.8 Single line stations	1.3
1.9 Description of stations	1.4
1.10 Operator station	1.4
2 ADD-ON MODULES	1.5
2.1 DSS module (main module)	1.5
2.2 ATS module (additional module)	1.5
2.3 Functions of add-on module programmed keys	1.5
2.4 Station visual monitoring	1.6
2.5 Data entry	1.6
2.6 Directory file and message entry	1.6
2.7 Procedure restrictions	1.6
3 FACILITIES AVAILABLE TO STATIONS 902, 903, 904 AND 905	1.7
3.1 General	1.7
3.2 Intercom function (stations 903, 904 and 905)	1.7
3.3 Handsfree mode (stations 903, 904 and 905)	1.7
3.4 Group listening	1.7
3.5 Adjustment of speaker volume level	1.7
3.6 Microphone cut-off (stations 903, 904, 905): "MICRO"	1.8
3.7 Call release	1.8
3.8 Background music	1.8
3.9 Special features	1.8
4 STATION TEST AND CALL TUNE ADJUSTMENT	1.9

2 ADD-ON MODULES

Refer to the Technical Description (GTD) manual for a detailed description of the add-on modules.

2.1 DSS module (main module)

The Direct Station Selection module can be associated with any type of station, by programming. It is fitted with 20 keys and 20 LEDs, used as follows:

a) **Standard version:** direct call and monitoring for 20 internal stations.

b) **Programmed version** (refer to DE, B58):

- Direct call and monitoring of internal stations.
- Speed dialling.
- Business account code.
- Night service pick-up.
- Function key:
 - Park.
 - Release.
 - Hold.
 - A.
 - B.
 - C.
 - D.
 - System hold.

2.2 ATS module (additional module)

The Add-on Trunk Selection module is fitted with 20 keys and 20 LEDs this module can be:

2.2.1 Associated with station 903, 904 or 905

In this case, the ATS module can be used as follows:

a) **Standard version:** to increase the number of trunk lines accessible via the station, and to monitor them.

b) **Programmed version** (refer to DE, B58):

- Personalized trunk line.
- Direct call and monitoring of internal stations.
- Speed dialling.
- Business account code.

- Preprogrammed mini-message.
- Function key:
 - Park.
 - Release.
 - Hold.
 - A.
 - B.
 - C.
 - D.
 - System hold.

2.2.2 Associated with a DSS module

In this case, the ATS module complements the DSS module, providing the same functions.

NOTE: Two ATS modules can be associated with a DSS module, which makes possible direct call and monitoring for 60 internal stations, in the standard version (see Installation and Cut over).

2.3 Functions of add-on module programmed keys

2.3.1 Personalized line key (on ATS module only)

This key can be used for monitoring the lines, and seizing external I/C or O/G calls (see Chapter 4).

2.3.2 Internal call key (stations 920 and 921)

This key can be used for the following features:

- **Direct call**

The user does not have to dial the directory number of the station concerned, and is connected automatically when he presses this key.

- **Enquiry call**

During a conversation with an internal or external correspondent, enquiry call and station selection are obtained automatically when the user presses the key corresponding to the station concerned the TRANSFER key is used in this case to cancel an enquiry call.

1.9 Description of stations

Refer to the General Technical Description (GTD) manual in the Technical File for a detailed description of the MULTILINE and SINGLE LINE stations.

1.10 Operator station

1.10.1 Business version

- One or two multiline stations in the system can be designated as operator stations, by system programming (see DE manual, program B42).
- The operator station is principally responsible for the following tasks:
 - handling incoming trunk line calls.
 - establishment of O/G calls requested by internal stations.
 - internal routing of incoming trunk calls.
 - entry of certain items of system data.
- For carrying out these tasks, the operator must be provided with a station 904 or 905.

1.10.2 Hotel version

In addition to the above-listed functions, the operator station is also a hotel management station. As such, it can be used to enter the parameters which are specific to the hotel and clientele management, ie:

- room assignment (check-in).
- room de-assignment (check-out).
- deposit.
- wake-up.
- cabin station.

This operator station must be an ALCATEL 905 Station as it makes use of both display lines.

- Call pick-up

The user presses the key corresponding to the station concerned, after dialling prefix 13, to pick up a call to a ringing station.

- Flexible call forwarding

The user presses the key corresponding to the forwarding destination station, after pressing the FORWARD key, to forward his calls to another station of his choice.

2.3.3 Business account code key

See Chapter 5.

2.3.4 Speed dialling key (stations 920 and 921)

See Chapter 5.

2.4 Station visual monitoring

Each station is represented by a LED, associated with the station direct call key this diode indicates station state (busy or free) at all times.

Two cases must be considered:

2.4.1 The LED corresponds to a multiline station

The LED can take four states:

Off : station free.
Slow flashing : station busy, internal line free.
On steady : station busy, internal line busy or station in programming mode.
Fast flashing : station in "DO NOT DISTURB" position.

2.4.2 The LED corresponds to a single line station

The LED can take three states:

Off : station free.
On steady : station busy or in line lockout state.
Fast flashing : station in "DO NOT DISTURB" position.

2.5 Data entry

- Data entry is possible with a DSS module associated with one or two ATS modules (standard or programmed version), for program number selection.

Keys 1 to n represent programs 01 to n respectively.

- Use: see DE manual.

2.6 Directory file and message entry

- The DSS main module and its associated ATS module can be used for entering messages or the directory file (standard or programmed version).
- When the user has selected directory (B25) or message (B04 or B39) programming:
 - Keys 1 to 20 on the DSS module correspond to letters A to T.
 - Keys 1 to 6 on first ATS module correspond to letters U to Z.
 - Keys 7 to 10 on first ATS module are used for entering a space, slash (/), colon (:), or quotation mark ("). Keys 11 to 20 are not used.
- key "C" is required on the associated station to enter lower cases. A key "C" programmed on the add-on module does not provide this feature.

2.7 Procedure restrictions

These modules do not provide the following procedures:

- Reply to internal call.
- Trunk line automatic park (except for an ATS module directly associated with a station).
- Parked line reconnection (the key does not replace the dialling function in this case).

3 FACILITIES AVAILABLE TO STATIONS 902, 903, 904 AND 905**3.1 General**

To facilitate use of telephone features, the user of a station 903, 904 or 905 has access to the following functions:

- Intercom function.
- Handsfree mode.
- Group listening mode.
- Microphone mute function.
- Background music.
- Station 902 user is provided with the "Group listening" and "Background music" features.

3.2 Intercom function (903, 904 and 905)

Station in stable position, selected by the user.

To obtain this position, with the station in the idle state, the user presses the handsfree key the associated LED flashes fast.

In this position, when the station is called (internal call), connection to internal correspondent is automatic, and the user is not required to execute any procedure.

At the end of an internal call, if the correspondent releases first, and if the handset is on-hook, station release is automatic.

To cancel the "INTERCOM" function, with the station in the idle state, the user depresses the "HANDSFREE" key, the associated LED goes off.

When a (internal or external) call is established, or the handset picked up, this function is temporarily cancelled.

In all cases, when the station returns to the idle state, the initial position of the "INTERCOM" function is obtained (enabled or not).

Remark:

An operator or night service station cannot select the "INTERCOM" position.

3.3 Handsfree mode (903, 904 and 905)

In this position, the station user can make calls with the handset on-hook.

Whether the station is in the "INTERCOM" position or not, establishment of an outgoing call, or reply to an incoming call, automatically positions the stations in the "HANDSFREE" mode.

In this position, the "HANDSFREE" and "SPEAKER" LEDs come on steady, and the call is conducted via the speaker and microphone incorporated in the station.

This function can be cancelled at any moment by picking up the handset, in which case the "HANDSFREE" and "SPEAKER" LEDs go off, and the conversation is continued using the handset.

To return to the "HANDSFREE" mode, the user must first depress the "HANDSFREE" key before going on-hook, otherwise the current call is released.

3.4 Group listening

During a call conducted with the handset off-hook, the user can select the group listening function at any moment, by depressing the "SPEAKER" key the LED associated with this key comes on steady.

In this position, the conversation is conducted via the handset and station speaker (reception only).

In this case, in contrast to the "HANDSFREE" mode, the microphone incorporated in the station is not in service (for stations 903, 904 and 905).

To cancel the "GROUP LISTENING" function, the user must depress the "SPEAKER" key again. The associated LED goes off.

3.5 Adjustment of speaker volume level

Volume level adjustment is possible at any time when the user has selected the "HANDSFREE" mode or "GROUP LISTENING" function.

One level out of four can be selected by pressing the "H.P + / -" key when the level is reached, the "SPEAKER" LED flashes.

3.6 Microphone cut-off (stations 903, 904, 905): "micro" key

If the user wishes not to be heard by his correspondent during a call, he can depress the "MICRO" key to cut off the microphone incorporated in the station, or the handset microphone, according to the mode in use.

In both cases, the user depresses the "MICRO" key to deactivate the microphone concerned the associated LED goes off.

To revert to normal conversation (use of microphone), the user depresses the "MICRO" key again the associated LED goes off.

3.7 Call release

Two cases must be considered:

- Station in the handsfree or group listening mode:
Release is obtained either by going on-hook, or by depressing the "RELEASE" key, the station reverts to its initial idle state.
- Station not in the handsfree mode (handset off-hook):
Release is obtained either by going on-hook, or by depressing the "RELEASE" key the station reverts to its initial idle state.

3.8 Background music

Only multiline stations, with the exception of the operator station(s), have access to this feature, which requires the presence of the analog option card, and an external background music source.

This feature is obtained with the multiline station in the idle state, by pressing the "SPEAKER" key the associated LED comes on steady, and music is sent via the station speaker.

Adjustment of volume level (See paragraph 3.5).

Feature cancellation:

- the user presses the "SPEAKER" key the associated LED goes off.
- this feature is cancelled temporarily by any other procedure executed on the station, the background music being reobtained when the station returns to the idle state.

Remark:

Background music selection is not cancelled on a station in the "FORWARD" or "DO NOT DISTURB" position.

3.9 Special features

The features listed below are described in detail in the Installation and Cut-over and DE manuals (Technical File).

- Station test.
- Ring tune selection.
- Date/time updating.

4 STATION TEST AND CALL TUNE ADJUSTMENT

STATIONS	STATION TEST AND ASSOCIATED MODELS	CALL TUNE ADJUSTMENT
903 904 905	Station on-hook - Press B01 - The LEDs glow cyclically with different tune. Press a key to display the corresponding code. - To halt the test, press the "RELEASE" key.	Station on-hook - Enter B02 - Select call tune by means of keys 1 to 6 on keyboard - Adjust volume level by means of the "TRANSFER" and F (+) keys. Enable by pressing the R key.
902	Station off hook - Press key F. - The LEDs glow cyclically. - The various call tunes ring. - To halt the test: Press the "RELEASE" key, or Replace the handset.	Station on-hook - Press key F. - Select call tune by pressing key F repeatedly (6 possible call tunes) - Adjust volume level by means of keys 0, 1, 2 and 3. Enable by pressing the R key.
901	Station off hook - Press key F. - The LEDs glow cyclically. - The various call tunes ring. - To halt the test: Replace the handset.	Station on-hook - Press key F. - Select call tune by pressing key F repeatedly (6 possible call tunes) - Adjust volume level by means of the knob located under the station. Enable by pressing the R key.

CHAPTER 2

STANDARD INTERNAL FEATURES

1	INTERNAL CALL	2.3
1.1	General	2.3
1.2	Internal station variable numbering scheme	2.3
1.3	Call establishment	2.3
1.4	Special features are analyzed in subsequent chapters	2.3
1.5	Internal outgoing call (handsfree dialling)	2.4
1.6	Internal incoming call	2.4
1.7	Procedure restrictions	2.5
2	ENQUIRY CALL, BACK AND FORTH, TRANSFER, CONFERENCE	2.6
2.1	Definitions	2.6
2.2	Establishment of enquiry call	2.6
2.3	Cancellation of enquiry call procedure	2.6
2.4	Called station reply to enquiry call	2.7
2.5	Enquiry call cancellation	2.7
2.6	Back and forth procedure	2.8
2.7	Call transfer	2.8
2.8	Internal three-party conference	2.8
2.9	Station availability	2.9
2.10	Procedure restrictions	2.9

Page

1 INTERNAL CALL

1.1 General

An internal call enables two users of the system to hold a conversation.

The following must be defined:

- different types of station used.
- internal station numbering scheme.
- call establishment.
- barring.
- limits.

1.2 Internal station variable numbering scheme

The standard numbering scheme is stored in system memory. It is loaded upon initialization.

Reminder: at initialization, the system can be set up in any of three different ways:

- in business version.
- in hotel version with business translator.
- in hotel version with hotel translator.

The numbering scheme is tied to the type of translator used by the system. This is why there are two numbering schemes.

1.2.1 With business translator

circuit number ↔ directory number

001 ↔ 201
002 ↔ 202
0du ↔ 2du
1du ↔ 3du

Each station standard directory number has three digits:

- 201 to 232 for model S1.
- 201 to 256 for model S2.
- 201 to 280 for model S3.
- 201 to 320 for model S4.

The operator call number is 9.

Directory numbers can be modified by means of a program and be composed of two or three digits.

1.2.2 With hotel translator

A station is called by dialling the local call prefix (2 at initialization), followed by the directory number.

On initialization, correspondence between line circuits and directory numbers is defined as follows:

Model	Equipment	→	Directory No.
S1	001	→	100
	002	→	116
	003	→	117
		→	
	021	→	135
	022	→	136
	023	→	101
	024	→	102
		→	
	036	→	114
S2	037	→	115
	038	→	201
	039	→	202
	040	→	203
		→	
	051	→	214
	052	→	215
	053	→	301
	054	→	302
		→	
S3 et S4	066	→	314
	067	→	315
	068	→	401
	a	→	a
	072	→	405
		→	
	081	→	414
	082	→	415
	083	→	000
		→	
	120	→	000

Line circuits 083 to 120 have no associated directory number (000).

The operator call number is 9. The directory numbers are programmable and can have two or three digits.

1.3 Call establishment

Call establishment description is detailed in tabulated form.

- internal outgoing call from any type of station.
- internal incoming call to any type of station.

In the following description, it is assumed in all cases that the called station is in the free state when called, and that the background music feature has not been selected.

Special features are analyzed in subsequent chapters.

1.4 Special features are analyzed in subsequent chapters

903 904 905	<ul style="list-style-type: none"> - No tone when the handset is picked up (multiline mode). - Display indicates number dialled (stations 904, 905). - Ring-back tone if the called station is not in the "TX" or "TERCUT" position. In the contrary case, a specific tone is received. - On reply, the LED associated with the "INTERNAL REPLY" key comes on steady. - The call is released when the handset is replaced or the "RELEASE" key depressed, and the "INTERNAL REPLY" LED goes off. <p>NOTE: "GROUP LISTENING" function or switch-over to "HANDSFREE" mode can be selected.</p>
902 multiline mode	<ul style="list-style-type: none"> - No tone when the handset is picked up. - On reply, the LED associated with the "INTERNAL REPLY" key comes on steady. - The call is released when the handset is replaced or the "RELEASE" key depressed, and the "INTERNAL REPLY" LED goes off. <p>NOTE: "GROUP LISTENING" function can be selected.</p>
901 multiline mode	<ul style="list-style-type: none"> - No tone when the handset is picked up. - On reply, the call is established and the LED associated with the "INTERNAL REPLY" key comes on steady. - The call is released when the handset is replaced. - A dial tone is received when the handset is picked up.
901 902 (single line mode) or single line station9	<ul style="list-style-type: none"> - On reply, the call is established. - The call is released when the handset is replaced or the "RELEASE" key depressed (for station 902 only). <p>NOTE: "GROUP LISTENING" function can be selected on station 902.</p>

1.5 Internal outgoing call (handsfree dialling)

903 904 905	<ul style="list-style-type: none"> - Cut-over of the microphone and amplifier incorporated in the station. On first digit the "HANDSFREE" and "SPEAKER" LEDs come on steady. - The display (on stations 904, 905) indicates the digit dialled. - Remark: in the case of a hotel translator, a 904 or 905 station displays the number dialled after the local prefix. The prefix is not part of the station number. - Ring-back or specific tone as indicated previously. - On reply, the LED associated with the "INTERNAL REPLY" key comes on steady. The conversation is conducted in the "HANDSFREE" mode. - To release the call, press the "RELEASE" key. <p>NOTE: The handset can be picked up during the call.</p>
902	<p>Feature identical to that of stations 903, 904 and 905, except that the handset must be picked up for conversing.</p> <p>NOTE: Switch-over to "GROUP LISTENING" can be selected.</p>
901	Feature not possible.

1.6 Internal incoming call

1.6.1 Stations 903-904-905

- INTERCOM POSITION NOT enabled:
<p>The "HANDSFREE" LED is off</p> <p>In case of call:</p> <ul style="list-style-type: none"> • A cadenced audio signal is received on the station. • The "INTERNAL REPLY" LED flashes slowly. • The calling station number is displayed on stations 904-905. • To reply, press the "INTERNAL REPLY" key. • The "HANDSFREE" and "SPEAKER" LEDs come on steady. • The call is conducted in the "HANDSFREE" mode. <p>Remarks:</p> <ul style="list-style-type: none"> • A called station can make internal or trunk out going calls, or reply to the current call. • If the called station goes off-hook, the ring tone stops, and the "INTERNAL REPLY" LED continues to flash. A signal is sent to the handset speaker. The call can only be established by depressing the "INTERNAL REPLY" key.
- The "HANDSFREE" LED flashes fast.
<ul style="list-style-type: none"> • In case of call: • A cadenced audio signal is received on the station. • The "INTERNAL REPLY" LED flashes slowly. • The calling station number is displayed (on stations 904, 905). • After a delay, a beep signal is sent, connection is automatic: the call signal stops, the "HANDSFREE" and "SPEAKER" LEDs come on steady. Ringing and beep signal lengths are programmable. <p>Remarks:</p> <ul style="list-style-type: none"> • When the calling party goes on-hook, release is automatic. The LEDs go off, and the "HANDSFREE" LED flashes. • The "HANDSFREE" mode can be cancelled during a call (handset off-hook). In this case, station release is not automatic.

1.6.2 Stations 901 and 902

- Multiline mode:
<ul style="list-style-type: none"> • Cadenced audio signal received on the station. The LED associated with the "INTERNAL REPLY" key flashes slowly. • To reply, pick up the handset and press the "INTERNAL REPLY" key. • The LED comes on steady and the call is established. • The call is released when the handset is replaced or the "RELEASE" key depressed (for station 902 only). • If the station user does not press the "INTERNAL REPLY" key, an audio signal is then sent to the handset speaker. The LED continues to flash. <p>NOTE: Switch-over to "GROUP LISTENING" can be selected for stations 902.</p>
- Single-line mode:
<ul style="list-style-type: none"> • Cadenced audio signal received on the station. • You must go off-hook to reply. • So the call can be established. • The call is released when the handset is replaced or the "RELEASE" key depressed (for station 902). <p>NOTE: Switch-over to "GROUP LISTENING" can be selected for stations 902.</p>

1.6.3 Single line stations

- Cadenced audio signal received on the station.
- Call establishment when going off-hook.
- Release when replacing the handset.

1.7 Procedure restrictions

- Calls between two users cannot be barred.
- The following operations are not possible during an internal call:
 - another internal call.
 - call hold.
 - call park.
 - trunk line DOD.
 - trunk line DID.
 - call forwarding.
 - selection of the "INTERCOM" position.
 - selection of the "DO NOT DISTURB" position.
- Only an operator station can call a station which has selected the "DO NOT DISTURB" function.

2.6 Back and forth procedure

The position before selecting this procedure is the "ENQUIRY CALL" position.

The first correspondent is held, and the initiator and enquiry call called party are engaged in an internal conversation.

TO REVERT TO CONVERSATION WITH THE 1ST CORRESPONDENT		
MULTILINE STATIONS	SINGLE LINE STATIONS	
	DECADIC	DTMF
Press key "F".	Dial 1, wait for the dial tone, dial 1 again.	Press the flash button, wait for the dial tone, dial 1.
NOTE: On stations 904 or 905, display shows first correspondent's number.		
From this position, the initiator can switch from one correspondent to the other, as many times as he wishes, by repeating the procedures described above.		

Back and forth cancellation

This cancellation can be obtained in two different ways:

- Enquiry call cancellation

On cancellation, the initiator is engaged in an internal conversation with one or other of his two correspondents.

- Call transfer

If the initiator releases (by going on-hook or other procedure) during a back and forth sequence, the call is then transferred.

2.7 Call transfer

The initial position before this procedure is ENQUIRY CALL, followed by back and forth or not.

Conditions required:

The initiator of the enquiry call can be in conversation with one or other of his two correspondents, both of whom must have remained on the line.

To transfer the call, the initiator releases (by going on-hook or other procedure), and his two correspondents are then engaged in an internal call.

Either correspondent can then make an enquiry call in turn.

2.8 Internal three-party conference

The initial position before this procedure is ENQUIRY CALL, followed by back and forth or not.

Conditions required:

The initiator of the enquiry call can be in conversation with one or other of his two correspondents, both of whom must have remained on the line.

2.8.1 Establishment of three-party conference

901 - 902 - 903 904 - 905 WITH PROGRAMMED "CONFERENCE" KEY	901 - 902 WITHOUT PROGRAMMED "CONFERENCE" KEY	SINGLE LINE STATIONS	
		DECADIC	DTMF
Press the "CONFERENCE" key	Dial 1, wait for the dial tone, dial 3.	Dial 1, wait for the dial tone, dial 3.	Press the flash button after dial tone
Signalling on initiator station: the "CONFERENCE" LED flashes fast. On stations 904 and 905, the numbers of the two other participants are displayed.			DTMF 12K station: dial 3 DTMF 16K station: press C.
The "TRANSFER" LED goes off.			
Signalling on participant stations: "CONFERENCE" LED comes on steady on station fitted with "CONFERENCE" KEY. Station 904 or 905 display shows: - left part: number of initiator station, - right part: two opposed arrows → ←			
No signalling on station not fitted with a "CONFERENCE" key.			

2.8.2 Three-party conference cancellation

THREE-PARTY CONFERENCE CANCELLATION			
901 - 902 903 - 904 905 WITH PROGRAMMED "CONFERENCE" KEY	901 - 902 WITHOUT PROGRAMMED "CONFERENCE" KEY	SINGLE LINE STATIONS	
		DECADIC	DTMF
One of the three stations releases	The other two stations are then engaged in an internal call.		
The initiator cancels the conference and reverts to conversation with his first correspondent.	Press the "CONFERENCE" key.	Dial 1.	Dial 1. Press the flash button.
The "CONFERENCE" LED goes off, and station 904 or 905 displays only indicates the number of the correspondent with whom the station is in conversation.			

- Automatic connection (intercom) is not possible to a station 903, 904, or 905 which is an enquiry call called party. Reply is made using the "INTERNAL REPLY" key.
- For an enquiry call, the initiator cannot:
 - leave a message to the called station.
 - make an automatic callback request if the called station is busy.
 - make an announcement on station 903, 904, or 905 speaker.

Remark:

Only an operator station can make an enquiry call to a station in "DO NOT DISTURB" position, and transfer a call or establish a three-party conference with this station.

2.9 Station availability

- The initiator of an enquiry call, back and forth procedure, or three-party conference, cannot execute procedures other than those relating to these features.

The procedures concerning the handsfree mode, group listening or microphone privacy are still available to him.

- A user receiving an enquiry call, back and forth call or conference call, cannot execute procedures other than those relating to the handsfree mode, microphone privacy or group listening functions.

2.10 Procedure restrictions

- Enquiry call consultation of a station in the busy state, programming state or "DO NOT DISTURB POSITION" (see note), is not possible.
- Call transfer or establishment of a three-party conference is not possible if the called station does not reply to the enquiry call.

CHAPTER 3

SPECIFIC INTERNAL FEATURES

	Page
1 STATION DIRECT CALL KEY	3.3
1.1 General	3.3
1.2 Direct call from station	3.3
1.3 Enquiry call	3.3
1.4 Procedure restrictions	3.3
2 CALLBACK REQUEST	3.4
2.1 General	3.4
2.2 User callback request	3.4
2.3 Operator station callback request	3.5
3 ANNOUNCEMENT ON FREE MULTILINE STATION	3.6
3.1 General	3.6
3.2 Procedure	3.6
3.3 Signalling on 902-903-904-905 with "internal reply" key	3.6
3.4 Remarks	3.6
3.5 Station availability	3.6
3.6 Procedure restrictions	3.6
4 AUTOMATIC CALLBACK ON BUSY STATION	3.7
4.1 General	3.7
4.2 Procedure	3.7
4.3 Callback on calling station	3.7
4.4 Cancellation of automatic callback on busy station	3.7
4.5 Feature particularities	3.7
4.6 Procedure restrictions	3.8
4.7 Limits	3.8
5 DIRECTORY FILE	3.9
5.1 General	3.9
5.2 Use	3.9

6 STATION GROUP PAGING	3.10
6.1 General	3.10
6.2 Use	3.10
6.3 Procedure	3.10
6.4 Reply to a paging call	3.10
6.5 Initiator station availability	3.10
6.6 Feature particularities	3.10
6.7 Procedure restrictions	3.10
6.8 Limits	3.10
7 HUNTING GROUPS	3.11
7.1 General	3.11
7.2 Procedure	3.11
7.3 Hunting group station possibilities	3.11
7.4 Feature particularities	3.11
7.5 Procedure restrictions	3.11
7.6 Limits	3.11
8 MINI-MESSAGE SERVICE	3.12
8.1 General	3.12
8.2 Type of message	3.12
8.3 Message selection by the depositary	3.13
8.4 Message display by the addresses	3.14
8.5 Management of the two-line display (905)	3.17
8.6 Message cancellation	3.17
8.7 Limits	3.18

2 CALLBACK REQUEST

2.1 General

The purpose of this feature is to leave a visual or a ring signal on a called station which does not reply.

Distinction must be made between two types of request:

- Callback request made by the user.
- Callback request made by the operator station.

2.2 User callback request

Only stations fitted with a display (stations 904-905) can receive this type of request.

2.2.1 Procedure

When a station calls a correspondent, if the latter does not reply, the calling party must proceed as follows:

MULTILINE STATION		SINGLE-LINE STATION	
901 - 902 - 903 - 904 - 905	DECADIC	DTMF	
The called party being rung, press key #	Dial 1	Press the flash button	
The calling station receives a specific tone for procedure acceptance.			
Remark: If the procedure is not accepted (see "PROCEDURE RESTRICTIONS"), the user remains in the ring-back position.			

2.2.2 Signalling

The called station display indicates the number of the station initiating the procedure.

Two callback requests can thus be left on the display of the station which is considered in the idle state. The user can use his station for both outgoing and incoming

callback request or requests are displayed each time the station reverts to the idle state.

2.2.3 Callback request cancellation

The callback request or requests displayed on a station can be cancelled from this station in two ways:

a) Clear operation

With the station in the idle state, all numbers displayed are cleared by pressing key #.

In this case, the user should first note the number or numbers to be called back later.

b) Callback of the stations concerned

The user calls one of the two numbers displayed, and cancellation is only effective if the correspondent replies to his call using his INTERNAL REPLY key (multiline station).

The callback request is not cancelled if the reply is obtained by automatic connection (intercom), or by means of a programmed key (filtering).

At the end of the call, when the station returns to the idle state, the number of the station called back is cleared. If two callback requests were initially displayed, the second number appears.

2.2.4 Procedure restrictions

- The initiator cannot cancel a callback request which he has left on another station.
- If the called station is forwarded to a 904 or 905 station, this one will receive the message.
- A callback request cannot be left:
 - on a station 901, 902, 903 or single line station.
 - on a station selected in the INTERCOM mode.
 - on a station called by an enquiry call.
 - on an operator station by dialling code 9 or 60. The directory number of the operator station must be used.
 - on a tone other than the ring-back or special ring-back tone.

2.2.5 Limits

- Maximum number of requests which can be left on one station = 2.
- Number of stations with one or two callback requests = 8.

2.3 Operator station callback request

In business version, all MULTILINE stations can receive this type of request.

In hotel version, all the stations can receive this type of request.

2.3.1 Procedure

When an operator calls a station which does not reply, the operator presses key #, and then receives a specific tone, indicating that the procedure is accepted and he can release.

NOTE: When an operator station calls a conventional analog single-line station which already has a message, the operator station displays "MESSAGE OP".

2.3.2 Signalling and availability of destination station

- a) On a 900 series station
 - the MESSAGE LED lights up steadily.
 - the station is considered idle and can be used for both outgoing and incoming calls.
- b) On a conventional analog station (hotel version)
 - a short, periodic ring signals the operator station message for stations not equipped with a MESSAGE LED:
 - the MESSAGE LED flashes, if equipped.
 - the analog station cannot receive any call other than a WAKE-UP (ALARM) call.

2.3.3 Operator station callback request cancellation

To cancel the request, the user must call the operator station by dialling 60 or 9. No other number or method cancels this message.

Cancellation is only effective if the operator replies to this call by depressing his "INTERNAL REPLY" key.

When the operator replies, the MESSAGE LED goes off on the calling station.

NOTE: When a check-in or check-out is made, the operator message is cleared out.

2.3.4 Special cases

- If the system is switched to the night service mode, and an operator callback request is left on the MULTILINE station assigned to the night service function, the user of this station cannot cancel the callback request.

2.3.5 Procedure restrictions

- The operator cannot cancel the callback request which he has left on a station.
- The operator cannot leave a callback request:
 - on a single line station in business version.
 - on a station selected in the intercom mode.
 - on a station in course of programming.
 - following enquiry call to a station.
 - if the operator station displays shows "#", corresponding to a busy station automatic callback request.
 - on a forwarded station, the callback request left on the forwarding station.

6 STATION GROUP PAGING

6.1 General

- All types of station have access to this feature.
- Only a station fitted with a speaker can receive general paging.
- Inclusion of a station in a paging group must be programmed by an operator station (see DE manual, program B28).
- The same station can belong to a number of paging groups.
- The second digit dialled (5 to 8) gives individual selection of each paging group.

6.2 Use

The station group paging feature is obtained:

- either directly if the station is in the idle state,
- or after parking the incoming call, if the user is engaged in another call on a trunk line.

6.3 Procedure

902-903 904-905	901	SINGLE-LINE STATION	
		DECADIC	DTMF
	Pick up.	Pick up, dial 4.	Pick up. Press key **.
Press key **.			
Then dial a digit between 5 and 8, corresponding to the required paging group.			
Station 904 or 905 display indicates **, then digit dialled.			
A procedure acceptance tone is received. The initiator of the procedure can send his message.			

- Each concerned, free MULTILINE station fitted with a speaker (handset on-hook), receives a call signal via the speaker, and the SPEAKER LED comes on steady.
- The initiator releases his station (on-hook or other procedure) at the end of his message, and the paging call terminates.

Remarks:

- The length of a message is limited by a programmable delay. If the initiator station does not release by the end of this delay, the user receives the busy tone and the called stations are released.

- If the feature is being used (message being sent), the user receives the busy tone.

6.4 Reply to a paging call

- During transmission of a message, the user concerned replies by pressing key *, and then dialling 9.
- Both users receive a beep tone, and are then engaged in an internal call.
- The feature is then accessible by other users.

6.5 Initiator station availability

During the message, only a release procedure is possible. On a multiline station, procedures concerning the handsfree mode and group listening and microphone privacy functions are still possible.

Remark:

Release is obtained on a DTMF station by pressing the flash button.

6.6 Feature particularities

An operator station has priority, a current call being cancelled if an operator station selects this feature (* 5 to 8), or initiates a paging call on external speakers (* 1 to 4). In this case, the initiator receives the busy tone, and the called stations are released.

6.7 Procedure restrictions

The procedure is not accepted in the following cases:

- current paging call on external speakers,
- current station group paging call,
- no station in paging group accessible (busy, programming, off-hook, etc.),
- enquiry call.

6.8 Limits

- Only one group paging call at a time, including zone paging call on external speakers.
- Maximum of four paging groups with up to eight stations in each group.

4 AUTOMATIC CALLBACK ON BUSY STATION

4.1 General

This is a basic feature, available to all stations of a system without restriction.

Each station can request one automatic callback only at a time.

This facility makes it possible to recall a station found busy, as soon as this station becomes free, without need to redial.

Station A calls station B which is busy. If station A user receives the busy tone, he can request an automatic callback.

4.2 Procedure

CALLING STATION			
901 - 902 - 903 - 904 905		SINGLE-LINE STATION	
		DECADIC	DTMF
Press key **.		Dial 5.	Press key #.
<ul style="list-style-type: none"> - Reception of a modulated tone indicating acceptance of the procedure. - The station can then release. - No special signalling on calling stations, except for stations 904-905: # is displayed. 			
Remark: If the user of a single-line station or station 901, 902 declared as "single-line" does not go on-hook after receiving the acceptance tone, he receives the dial tone again, and can then make a new call (internal or trunk). The user requesting an automatic callback on busy station, retains access to all features initially available to his station. If the user repeats the automatic callback procedure, this has no effect and the busy tone is maintained.			

CALLED STATION	
There is no special signalling for a station to which an automatic callback request has been made.	
The user retains access to all features initially available to his station.	

4.3 Callback on calling station

When station B is free, station A is called, if also free. In the case of a station fitted with an "INTERNAL REPLY" key, the associated LED flashes intermittently, and station A reply (by going off-hook or other procedure)

causes automatic callback on station B, without station A having to redial.

4.4 Cancellation of automatic callback on busy station

An automatic callback request is cancelled in the following cases:

- On callback to both stations, whether followed by a conversation or not.
- Before callback, by a procedure initiated by the calling party:

902 - 903 904 - 905	901	SINGLE LINE STATION	
		DECADIC	DTMF
Press key #.	Pick up, press key #.	Pick up, dial code 6.5.	Pick up, press key #.
# is cleared from the station 904 or 905 display.			

- After a (system) delay, if the two stations have not been free simultaneously.
- In the case of failure to reply by the initiator of the automatic callback, when recalled by the system (ringing time is programmable).

4.5 Feature particularities

- The same station can be an automatic callback calling and called party, at the same time.
- A forwarded station can request automatic callback, in which case the forwarded station (and not the forwarding station) is recalled.
- If a forwarded station is the called party for an automatic callback, it is the forwarding station which is found busy, and subsequently recalled.
- If a station which is the called party for an automatic callback, then selects the call forwarding function, the forwarding station is recalled.
- If a station which is the called party for an automatic callback, then selects the "DO NOT DISTURB" position, the automatic callback cannot be made, unless the station reverts to its initial position before cancellation of the automatic callback request by the system delay.
- If an operator station is waiting for an automatic callback, and then switches to the night service state, the automatic callback is not made, unless the operator station reverts to its initial position before cancellation of the automatic callback request by the system delay.

5 DIRECTORY FILE

5.1 General

- The directory file contains internal user names, and the call number and name assigned to each trunk line.
- The file can only be written or read by an operator (see DE manual, program B25).

5.2 Use

This facility can only be accessed from a station fitted with a display.

5.2.1 Internal call

- When the user makes an internal call, his display indicates the number and user name associated with the called station.
- When the user is called from an internal station, his display indicates the number and user name associated with the calling station.

5.2.2 Outgoing trunk call

When the user executes a DOD seizure, his display shows the letters EXT. and the number assigned to the trunk line.

This number is cleared when the first digit is dialled.

5.2.3 On printout of room check-out ticket (Hotel Version)

When the operator checks out a room, the guest's name is printed if it was entered by B25.

Remark:

Making a room available does not erase the directory file.

4.6 Procedure restrictions

Automatic callback on busy station request is not accepted in the following cases:

- the called station is an operator station.
- the called station is a night service station accessed by code 60.
- the called station is in "DO NOT DISTURB" position (see "Feature particularities").
- the called station is a MULTILINE station in course of programming.
- the called station is in line lockout state.
- following an enquiry call.
- on a tone other than the busy tone.
- if the calling party has already made a busy station or busy trunk direction automatic callback request.
- if the system limits have been reached.

4.7 Limits

Number of automatic callback requests by a station	1
Number of simultaneous automatic callback requests concerning the same station:	8
Number of simultaneous automatic callback requests concerning the same system (busy station and busy trunk direction):	8

MINI-MESSAGE SERVICE

General

multiline station users can leave a written message on their stations (904-905), in order to indicate the call-party that they are away, how to contact them, the time at which they will be back, etc...

A message left on a station will not restrict the operating features of this station.

This feature is called a "MINI-MESSAGE SERVICE" key on the stations concerned.

A message left on a called multiline station can only be left on a multiline station (904-905) fitted with a display. Therefore, a distinction must be made between the following:

Message depositary: the user who leaves a message on his multiline station, before going out.

Message addressee: the user who calls the station on which a message has been left. To read this message, the addressee must therefore have a station (904-905) equipped with a display.

Types of message

There are three types of written message:

Fixed written messages.

Common written messages.

Personal written messages.

Fixed written messages

multiline stations have access to these messages.

There are seven fixed messages, numbered 01 to 07.

MESSAGE 01	→	IN-HOUSE MEETING
MESSAGE 02	→	MEETING OUTSIDE
MESSAGE 03	→	ON HOLIDAY
MESSAGE 04	→	MESSAGE PLEASE
MESSAGE 05	→	CALL OPERATOR
MESSAGE 06	→	BACK SOON
MESSAGE 07	→	BACK TOMORROW

8.2.2 Common written messages

There are 21 common messages, numbered 08 to 28, accessible for all multiline stations.

These messages are programmed by means of the operator password (refer to DE manual B39). They are either complete messages, or messages to be filled in.

Example:

The technician programs message 09	→	BACK ON	/
The user completes it	→	BACK ON	03/10

8.2.3 Personal written messages

This feature is accessible to stations 904-905 only.

As in the previous case, there are two types of message (complete or to be filled in).

Each user can program two personal written messages on his station, numbered 29 and 30 with the help of the B04 program or the "PERSONAL WRITTEN MESSAGE" programmed key (see DE B41), this key is then used instead of running the B04 (see DE B04 and B41).

7 HUNTING GROUPS

7.1 General

- This feature is used to find a free station in a hunting group, by dialling a two-digit call number (51 to 58 for the standard version). The second digit dialled (1 to 8) identifies the hunting group.
- This feature can be used for an internal or enquiry call.
- Each station in a hunting group can also be called individually by its directory number.
- Up to 32 stations can be assigned to 1 to 8 hunting groups.
- Inclusion of a station in a hunting group must be programmed by an operator station (see DE manual, program B28).

7.2 Procedure

- This feature is identical to an internal or enquiry call, except for the following points:
 - a station is called by a two-digit number (standard version).
 - no display of called or answering station.
- According to the programming performed, one or two types of hunting group can be programmed:

a) Fixed head hunting group

The search for a free station in the hunting group starts with the station declared as the group head.

If this station is busy or inaccessible, the next station in the order programmed is rung. If the second station is also busy, the following station is rung, and so on up to the last station in the hunting group.

b) Rotating head group

The search for a free station in the hunting group is cyclic, starting with the first free station designated after the last station called (whether the latter answered or not).

Remark:

If all stations in a hunting group are inaccessible (DND, busy, programming, etc.), the calling party can select automatic callback on the busy station, in which case the callback is made to the first station found free by the system in either case (fixed or rotating head group).

7.3 Hunting group station possibilities

Users of the stations have access to all features available to an ordinary station, apart from the following restrictions:

- all stations in a group but one can withdraw temporarily from the group (call forwarding or transfer).
- a station in a hunting group cannot use the prefix of its group.

7.4 Feature particularities

- A station belonging to a hunting group can select call forwarding or time-delay forwarding, in which case the station is considered to have withdrawn temporarily from the group.
- If a station belonging to hunting group has made a time delay forwarding selection, this feature is not implemented when the station is called. The call is maintained on the station concerned for this feature only.

7.5 Procedure restrictions

- An operator station cannot be programmed in a hunting group.
- A station must belong to one hunting group only.
- A station belonging to a hunting group cannot call the latter.

7.6 Limits

Total number of stations	}		32
Max. number of groups	}		8

Message selection by the depositary

General

The depositary can select one or two messages on his

messages selected from the mini-message service (fixed, common, or personal).

and mes. is used as a complement to the

1st message: ATTENDING A MEETING
2nd message: CALL EXTENSION No.312

Two types of programmed keys for the mini-service. Each type corresponds to a particular selecting mode:

"MINI-MESSAGE" key (see DE B41) allowing to select any two messages among 30 available (see on 8.3.2).

"PREPROGRAMMED MINI-MESSAGE" key (see DE B15, B41 and B58) allowing to select a message associated with the key when it was programmed (see Section 8.3.3).

"MINI-MESSAGE" key can only be programmed on a multiline station and one is enough. "PREPROGRAMMED MINI-MESSAGE" keys can be programmed on a given station (associated 920 add-on module (ATS)), a different message being associated with each of these

on station may feature both types of key. It is impossible to mix both message selection as when selecting two messages.

Messages which are chosen according to one of two messages can be completed before to be in mes.

FILL IN A MESSAGE:

is reserved for stations 904 and 905.

"CONF" and "CONFERENCE" keys can be used for moving the cursor to next or previous letter, from or position.

Press key "C" to choose capital letters or small letters.

- There are three different ways of displaying letters:
- From an ATS module and its associated DSS module:
 - Each key corresponds to a letter (see DE B04).
 - Using the alphabet run:
 - In this case, keys D, # and # are used.
 - Key D initiates automatic ascending order alphabet run.
 - Key # goes to the next letter.
 - Key # returns to the previous letter.
 - Using the station programmable keys:
 - Each programmable key is associated with four letters. When a key is depressed, a group of four letters is selected. The required letter is then selected by means of a key (1 to 4) on the digital keyboard.

DIGITAL KEYBOARD	PROGRAMMABLE KEYS											
	1	2	3	4	5	6	7	8	9	0	*	#
1	A	E	I	M	Q	U	Y					
2	B	F	J	N	R	V	Z					
3	C	G	K	O	S	W						
4	D	H	L	P	T	X						

Remark:

A message must not exceed 16 characters.

8.3.2 Selecting messages with the "MINI-MESSAGE" key

The multiline depositary station must be in the idle state.

Press the "MINI-MESSAGE" key.

"MESS 1" appears on the display (selection of 1st message). Two cases can be considered:

1st Case : Select the number of first message:

- 01 to 07 fixed message.
- 08 to 28 common message.
- 29 or 30 personal message.

The message appears on the display.

The message can then be filled in, provided that it is not a fixed message.

Enable using the R key.

THE FIRST MESSAGE HAS BEEN ENTERED.

2nd Case: Display the messages before available:

To display the available messages in ascending order, press the F key. To display them descending order, press the TRANSFER key. Select the message you wish.

The message can then be filled in, provided that it is not a fixed message.

Enable using the R key.

THE FIRST MESSAGE HAS BEEN ENTERED.

The 2nd message selection is done as follows:

- "MESS 2" appears on the display (selection of 2nd message).
- If the user wishes to leave only one message, he releases after enabling the first message.
- Otherwise, he resumes the procedure to leave a second message.

The LED associated with the "MINI-MESSAGE" key glows when one or two messages have been left on the station.

Remarks:

- The user of a station 901, 902 or 903 (without display), can however leave one or two messages, provided that he has a "MINI-MESSAGE SERVICE" key and a list of available messages. In this case, he must not select an incomplete message.
- If 2 messages are selected by a 905 station user, only the first message is directly displayed on his station. To read the second, the user must press the C key on this station. If 2 messages are selected by a 904 station user, the user can read the message by pressing the C key.

8.3.3 Selecting messages with the "PREPROGRAMMED MINI-MESSAGE" key

When the user of a 904 or 905 station pushes on a "PREPROGRAMMED MINI-MESSAGE" key, the associated message is displayed. This one will be stored either with the "R" key or after a 7 second delay.

If the message associated to the key is incomplete, it can be completed (see § 8.3.1) by keying the first character before the end of the 7 second delay. This timer is reset each time a character is keyed in.

Pressing another programmed key validates a second message. The message thus selected is displayed on the

2nd line (905 station). The LED associated with the key comes on.

NOTE: Pressing a 3rd "PREPROGRAMMED MINI-MESSAGE" key will have no effect.

Remarks:

- User must know which message is associated with the key before selecting it.
- The user of a station 901, 902 or 903 station must only select one (or two) message(s), provided that he has the corresponding "PREPROGRAMMED MINI-MESSAGE" keys features.
- If 2 messages are selected by a 905 station user, only the first message is directly displayed on his station. To read the second, the user must press the C key on this station. If 2 messages are selected by a 904 station user, the user can read the messages by pressing the C key.

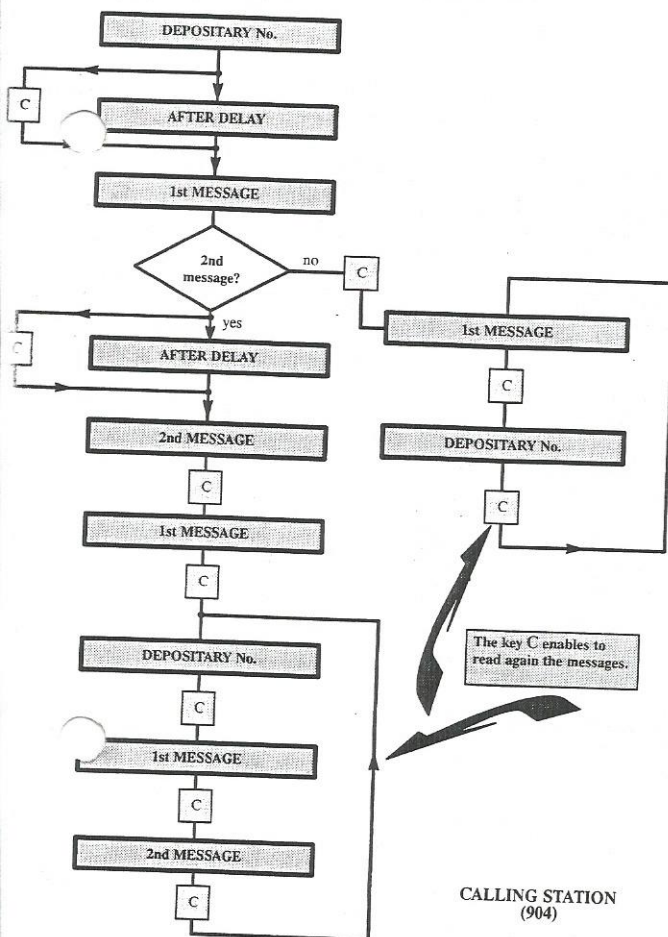
8.4 Message display by the addresses

The mini-message service associated with a multiline station can include one or two messages.

On 904 station

As soon as the depositary station is rung, the user of the

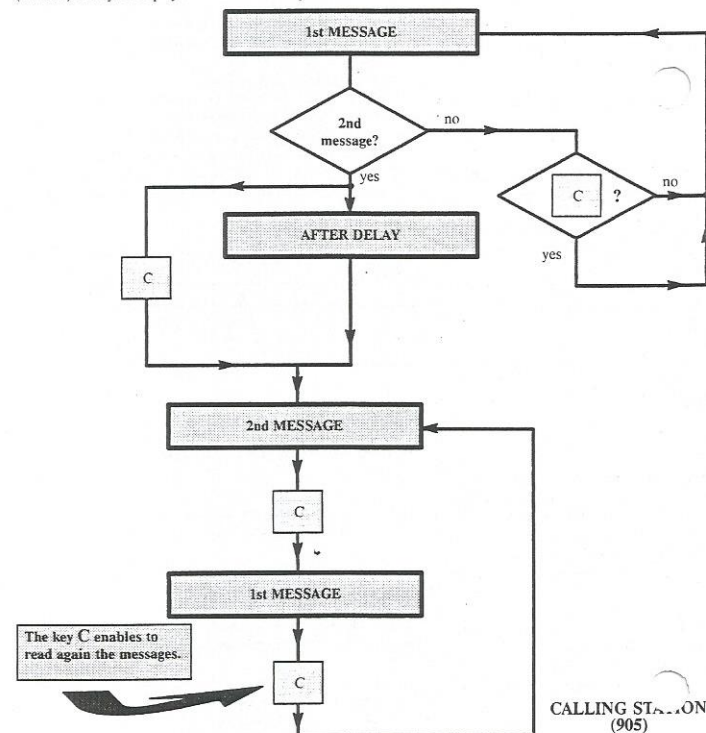
904 station (caller) can read the message(s) left without doing anything. Diagram is as follows:



CALLING STATION
(904)

8.4.2 On 905 station

As soon as the depositary station is rung, the message (MESS1) is automatically shown on the 2nd line of the calling station display (905). The 2nd message (MESS2), if any, is displayed after a time delay:



CALLING STATION
(905)

Remarks:

In case of direct forwarding, the display shows the message of the last station in the forwarding chain.
In case of time-delay forwarding, the display shows the message of the called station, and at the end of a delay, the message of the forwarding station.
The mini-message service feature remains valid for the local calls which are not filtered.

5 Management of the two-line display (905)

D. = Stored Data (forwarding, automatic call-back, busy station, call-back request).

EXT. and call duration or number of charge units (if the line is subject to remote metering).

5.2 Message addressee station (on ring-back tone)

	DISPLAY	
	1 st line	2 nd line
No message left on called station	Called station No.	Date and time
Message left on called station	Called station No.	Message
Called station (multiline) engaged in a call, without message	Called station No.	Busy
Called station (multiline) engaged in a call, with message	Called station No.	Message

8.6 Message cancellation

8.6.1 Cancelling a message selected by the "MINI-MESSAGE" key

When the message depositary does not want to display his message(s) any longer, he must clear the contents of his mini message service.

In this case, when the LED associated with the "mini-message" key is on, the user must depress the key. "MESS 1" is displayed on the station.

By depressing the "RELEASE" key, he clears the contents of the mini-message service (including the second message, if any).

The LED associated with the key goes off.

8.6.2 Cancelling a message selected by the "PREPROGRAMMED MINI-MESSAGE" key

When a preprogrammed mini-message has been selected, the LED associated with the "PREPROGRAMMED MINI-MESSAGE" key is lit. To clear the message, press this key and the LED will be switched off.

NOTE: If two messages have been left on the station, the above cancelling procedure must be followed for both messages.

5.1 Message depositary station:
In the state or station rung (exte call):

	DISPLAY	
	1 st line	2 nd line
Without message or S.D.	No display	Date and time
Without message with S.D.	S.D.	Date and time
With message without S.D.	Message	Date and time
With message with S.D.	S.D.	Message

Station rung (internal call):

	DISPLAY	
	1 st line	2 nd line
Without message or S.D.	Calling party No.	Date and time
Without message with S.D.	Calling party No.	Date and time
With message without S.D.	Calling party No.	Message
With message with S.D.	Calling party No.	Message

Engaged in a call:

	DISPLAY	
	1 st line	2 nd line
Without message or S.D.	-	Date and time
Without message with S.D.	-	Date and time
With message without S.D.	-	Date and time
With message with S.D.	-	Message

If the calling party is an internal correspondent: Calling party No., and calling party name (if included in the directory file).

If the calling party is an external correspondent:

8.7 Limits

- Two messages per multiline station.

8.5 Management of the two-line display (905)

- common messages max.

- 7 fixed messages.

S.D. = Stored Data (forwarding, automatic call-back, personal messages max. programmable per station on busy station, call-back request).

EXT. and call duration or number of charge units (if the line is subject to remote metering).

8.5.2 Message addressee station (on ring-back tone)

8.5.1 Message depositary station:

a) In the idle state or station rung (external call):

	DISPLAY	
	1 st line	2 nd line
Without message Nor S.D.	No display	Date and time
Without message with S.D.	S.D.	Date and time
With message Without S.D.	Message	Date and time
With message With S.D.	S.D.	Message

b) Station rung (internal call):

	DISPLAY	
	1 st line	2 nd line
Without message Nor S.D.	Calling party No.	Date and time
Without message with S.D.	Calling party No.	Date and time
With message Without S.D.	Calling party No.	Message
With message With S.D.	Calling party No.	Message

c) Engaged in a call:

	DISPLAY	
	1 st line	2 nd line
Without message Nor S.D.	-	Date and time
Without message with S.D.	-	Date and time
With message Without S.D.	-	Date and time
With message With S.D.	-	Message

- * If the calling party is an internal correspondent: Calling party No., and calling party name (if included in the directory file).

- * If the calling party is an external correspondent:

8.6 Message cancellation

8.6.1 Cancelling a message selected by the "MINI-MESSAGE" key

When the message depositary does not want to display his message(s) any longer, he must clear the contents of his mini message service.

In this case, when the LED associated with the "mini-message" key is on, the user must depress the key.

"MESS 1" is displayed on the station.

By depressing the "RELEASE" key, he clears the contents of the mini-message service (including the second message, if any).

The LED associated with the key goes off.

8.6.2 Cancelling a message selected by the "PREPROGRAMMED MINI-MESSAGE" key

When a preprogrammed mini-message has been selected, the LED associated with the "PREPROGRAMMED MINI-MESSAGE" key is lit. To clear the message, press this key and the LED will be switched off.

NOTE: If two messages have been left on the station, the above cancelling procedure must be followed for both messages.

CHAPTER 4

STANDARD EXTERNAL FEATURES

	Page
1 TRUNK CALL	4.3
1.1 General	4.3
1.2 Types of station used	4.3
1.3 Materialization of trunk lines	4.3
1.4 Use of multiline stations	4.4
1.5 Trunk number read	4.4
1.6 Call duration and cost read	4.5
2 ESTABLISHMENT OF A TRUNK CALL	4.6
2.1 Outgoing call	4.6
2.2 Incoming trunk call	4.6
2.3 Procedure restrictions	4.6
3 ENQUIRY CALL, BACK AND FORTH, TRANSFER, CONFERENCE	4.7
3.1 Definitions	4.7
3.2 Enquiry call procedure	4.7
3.3 Enquiry call cancellation	4.7
3.4 Called station reply to enquiry call	4.8
3.5 Enquiry call cancellation on station with transfer key	4.8
3.6 Enquiry call cancellation on station without transfer key	4.8
3.7 Back and forth procedure	4.8
3.8 Call transfer	4.9
3.9 Procedure error recall	4.10
3.10 Conference (One external and two internal correspondents)	4.10
3.11 Station availability	4.11
3.12 Procedure restrictions	4.11
4 CALL HOLD	4.13
4.1 General	4.13
4.2 Hold procedure	4.13
4.3 Reconnection after hold	4.13

4.4 Procedure restrictions	4.13
5 AUTOMATIC HOLD	4.14
5.1 General	4.14
5.2 Procedure	4.14
5.3 Procedure restrictions	4.14
6 SYSTEM HOLD	4.15
6.1 General	4.15
6.2 Procedure	4.15
6.3 Procedure restrictions	4.15
7 CONSULTATION HOLD	4.16
7.1 General	4.16
7.2 Procedure	4.16
8 TRUNK LINE PARK	4.17
8.1 General	4.17
8.2 Line park	4.17
8.3 Station availability	4.17
8.4 Parked line reconnection	4.17
8.5 Feature particularities	4.17
8.6 Parking cancellation	4.17
8.7 Procedure restrictions	4.18
8.8 Limits	4.18
9 OPERATOR STATION FACILITIES	4.19
9.1 Operator station recall	4.19
9.2 Trunk direction 9 reservation	4.19
10 TRUNK BARRING	4.20
10.1 General	4.20
10.2 Station category	4.20
10.3 Barring table	4.20
10.4 Barring mode	4.21
10.5 Use	4.21
10.6 Feature particularities	4.21
10.7 Procedure restrictions	4.21
10.8 Limits	4.22

1 TRUNK CALL

1.1 General

A station in the system can be connected to an external correspondent (public system subscriber or other), in a number of ways:

- DOD seizure.
- reply to an incoming call.
- following transfer of a call from another station.
- reconnection after parking.
- internal transfer of an incoming call to another station.
- etc...

Remark:

The category of the station must be compatible with the different features listed above.

2 Types of station used

All types of station described in Chapter 1 can have access to the different trunk line features.

1.3 Materialization of trunk lines

1.3.1 Multiline station trunk line keys

Access to trunk lines from a MULTILINE station is obtained by means of the trunk line keys, programmed according to the requirements of the system (see DE manual, program B41).

Trunk lines can be materialized on these stations in two separate ways:

- personalized lines (personalized trunk circuits),
- trunk direction.

LED DIFFERENT SIGNALLING STATES	
LED state	Display
On steady	_____
Slow flashing	_____
Fast flashing	_____
Fast flashing for 1 s. off for 1 s	_____
Fast flashing for 1 s. on for 1 s	_____

1.3.2 Personalized lines

A programmed key is required on the station, for each personalized line. An indicator LED is associated with each key.

- This key is used for the following:
 - DOD seizure.
 - reply to an incoming call on the line concerned.
 - reply to transfer of this line by another station.
 - reconnection of a line held on the station.
 - reply to the line in the callback mode (automatic callback on busy station, procedure error, etc.).
- The diode associated with this key can take six different states:
 - off : line available.
 - on steady : line busy.
 - slow flashing: line rung.
 - fast flashing: line held on station.
 - fast flashing for one second, off for one second: line redistribution (transfer, procedure error, automatic callback on busy station, etc.).
 - fast flashing for one second, on steady for one second: call now urgent (no reply to incoming call).

1.3.3 Add-on Trunk Selection (ATS) module

This module can only be associated with station 903, 904 or 905.

When the number of programmable keys on the station is insufficient to cover feature requirements (more than 10 personalized lines, etc.), an add-on module with 20 keys and 20 indicator LEDs must be associated with the station.

Two cases must be considered:

- Standard version ATS module.
 - The 20 keys and LEDs must be used to personalize trunk lines 1 to 20 of the system.
- Programmed version ATS module (see DE manual, program B58).
 - The 20 keys and LEDs can be programmed as follows, as required:
 - personalized trunk line keys (line number 1 to 28). Feature as described in Section 1.3.1 above.
 - speed dialling key (see Chapter 5).
 - business account code key (see Chapter 5).
 - direct internal call key (see Chapter 1).

Remark:

A personalized line can be seized by depressing the corresponding programmed key. Refer to Chapter 1 of this manual for a detailed description of the handsfree and group listening functions.

1.5 Trunk number read

This facility is only available to station fitted with display.

During an outgoing trunk call, the display shows EXT. and call duration or the number of charge units. The user can read the number of his external correspondent at any time during the conversation.

EXT 0 H3 5

OR

EXT T 0 1 5 2

1.4 Use of multiline stations

	903 - 904 - 905	902	901
Call with handset off-hook.	Handsfree mode or group listening function can be selected at any time. To release, depress the "RELEASE" key or replace the handset.	Group listening function can be selected at any time.	No group listening function. The handset must be replaced at the end of the call.
Call with handset on-hook.	Depression of a programmed line key automatically selects the handsfree mode on the station. To release, depress the "RELEASE" key. The handsfree mode can be cancelled and reselected at any time.	No "handsfree" mode. Dialling can be executed with the handset on-hook (however it must be off-hook to engage conversation).	This feature cannot be selected on this type of station.

- Depress key B on the keyboard, to display the external correspondent's number.

9 8 5 6 7 8 8 4

- Depress key B again to switch the display back to its initial function.

EXT 0 H3 6

OR

EXT T 0 1 5 3

Remarks:

- Key "A" on the keyboard can also be used for this procedure.
- When this type of call is transferred, if the transfer destination is a station fitted with a display, this feature is also available on the latter.

1.6 Call duration and cost read

- These facilities are available to stations 904 and 905 only.
- The procedure is inoperative for free calls (call duration is already displayed).
- During a call on a metered line, (see B50) when the display indicates the number of charge units (example: T0004), the user can read call duration at any time:

EXT T0157

- Depress keyboard key "A": the number of charge units is replaced with the duration of the call.

EXT 0 H3 8

- Depress keyboard key "A" again: the number of charge units is displayed again.

EXT T0158

- To read the number, depress key "B", as indicated above.

Depress key "B" again to return to the initial display.

Remarks:

- During call duration display, reception of a new metering pulse returns the display to its initial function (indication of number of charge units).
- If an external number has been read, the display is returned to its initial function (indication of number of charge units), by depressing key "A".

Cost of the call can be displayed in the same way as call duration (by depressing key A) when the basic charge unit price has been programmed (see DE, program B46). Depress key A to obtain the following successively: number of charge units, cost and duration of the call.

Initial display

EXT T0135

Cost of the call

FR 104.00

(FR: francs)
Currency unit
See DE, manual, B46

Duration of the call

EXT 0 H4 4

To read the number, proceed as indicated above.

2 ESTABLISHMENT OF A TRUNK CALL

2.1 Outgoing call

	903 - 904 - 905	901-902	SINGLE LINE STATION AND 901-902
		MULTILINE	SINGLE LINE
Trunk line selection	No access prefix. Depression of the key corresponding to the required line or trunk direction (the LED associated with the key must be off). When the line is selected, the LED comes on steadily on the station concerned, and on all other stations on which the same line is personalized. The user receives the tone. Station 904 or 905 display shows EXT.	No access prefix. To select line, proceed as for station 904 or 905.	After off-hook and dial tone reception: 1) Press the appropriate key (line or trunk direction). or 2) Dial prefix 0. A free line is selected in trunk direction 1. Note: To access a line of a private circuit group, dial a two digit prefix. Ex: Dial 82 for circuit group 2. External dial tone is received.
	As soon as a line has been selected, it is marked "busy" on all stations with personalized keys (corresponding LED on).		
Dialling	After receiving the external dial tone (group center), the user can dial. After routing, the user receives the ring-back or busy tone. On station 904 or 905 display: After switching over to conversation phase (end of delay or battery reversal), the dialled number is replaced with call duration or the number of charge units (for remote metering lines).		

2.2 Incoming trunk call

In case of incoming call:

- Multiline or single line stations which have the Personalized Call Routing (PCR) function for this line, receive a cadenced ring signal.

903 - 904 - 905	902
	MULTILINE
In case of incoming call, the associated LED flashes slowly. PCR: ring signal received. No PCR: No ring signal. To reply, press the key corresponding to the calling line. At the end of the conversation, the user releases by pressing the "RELEASE" key or by going on-hook. On stations 904 or 905: The display shows "EXT", and call duration or the number of charge units if applicable (charging of the calling party for the line). The user can reply by picking up his handset, or in the handsfree mode.	In case of incoming call, the (PCR) station is rung, and the associated LED comes on steadily. The pick-up handset to reply, then he is directly connected with the external correspondent. Group listening function can be selected during the call. At the end of the conversation, press the "RELEASE" key, or go on hook.
When the incoming call is taken by a station: - PCR stations are no longer rung. - The LED associated with the line is on steady, on all stations for which this line is personalized. No user can seize this line for an outgoing call.	

- This feature is applicable to stations 901 or single line stations in the same way as for stations 902, except that group listening function is not available, and the handset must be replaced at the end of the conversation.

2.3 Procedure restrictions

- A station with "I/C only" has no DOD entitlement.
- A PSC category station (controlled station) must make O/G calls via the operator.
- A cabin station must go through the operator to request an external number.
- During a trunk call, the following procedures are not possible:
 - internal call.
 - call forwarding.
 - selection of the "INTERCOM" position.
 - selection of the "DO NOT DISTURB" position.

3 ENQUIRY CALL, BACK AND FORTH, TRANSFER, CONFERENCE

3.1 Definitions

Enquiry call:

During a conversation with an external correspondent, the enquiry call procedure can be used for calling an internal correspondent for consultation.

Back and forth:

Following an enquiry call, the initiator can switch successively from one correspondent to the other.

Transfer:

After an enquiry call, followed by the back and forth procedure or not, the initiator can release, leaving the external correspondent in conversation with the enquiry call called party.

Conference:

After an enquiry call, followed by the back and forth procedure or not, the initiator can establish a three-party conference, the three correspondents then being engaged in a triangular conversation.

3.2 Enquiry call procedure

902 - 903 - 904 905	901	SINGLE LINE STATION	
		DECADIC	DTMF
Press the "TRANSFER" key. The "TRANSFER" LED comes on steady. On station 904 or 905 display: EXT. call duration, charge units or price are cleared.	Dial 2 or press the "TRANSFER" key if programmed (see DE manual).	Dial 2	Press the flash button
		The user receives the dial tone, advising him that he can dial the internal number.	

- The external correspondent is held, and receives a specific tone or music on-hold, if this option is included, advising him that the call has not been cut off and that he should not release.
- After dialling the internal correspondent's number, the initiator of an enquiry call can receive one of the three following tones:

- normal ring-back tone, indicating that the called party is free and his station is being rung,
- specific callback tone, indicating that the called party is busy and is receiving an audio signal (busy override beep), and can reply to this call by a specific procedure.
- busy tone, indicating that the called party is busy or unobtainable, and is not receiving the current call.

3.3 Enquiry call cancellation

BEFORE DIALLING OR ON RECEPTION OF A TONE				
902 903 904 905	901 with programmed "TRANSFER" key	901 without programmed "TRANSFER" key	SINGLE LINE STATION	
			DECADIC	DTMF
Press the "TRANSFER" key. The associated LED goes off			Dial 1.	Press the flash button.
On stations 904 or 905, display shows EXT. call duration, charge units or price.				
In all cases, the initiator returns to the external correspondent.				

- If the external correspondent has released in the meantime, the initiator receives a busy tone when returning to the external correspondent, inviting him to release.
- If the initiator releases (by going on-hook or other procedure), he receives a procedure error ring-back tone, the station is rung, and the LED for the line in question (multiline station) flashes intermittently. If the user does not pick up within a delay (programmable), the call is then rerouted to the operator station (s).

THE CALLED STATION IS BUSY AND THE INITIATOR HAS EXECUTED A BUSY OVERRIDE PROCEDURE. IN THIS CASE, TO CANCEL:			
903-904 905	902-901 with programmed key "A"	902-901 without programmed key "A"	SINGLE LINE STATION
			DECADIC
Press key "A".		Dial 1.	Press the flash button.

3.4 Called station reply to enquiry call

The external correspondent is held, the initiator receives the ring-back tone, and the enquiry call called station is rung until he replies. The called station display (station 904 or 905) indicates the number of the initiator station.

The initiator and called party are then engaged in an internal call. The external correspondent does not participate in this conversation, and continues to receive the hold signal.

From this position, the enquiry call initiator can execute one of the following procedures:

- back and forth.
- transfer.
- conference.
- enquiry call cancellation.

3.5 Enquiry call cancellation on station with transfer key

	902 - 903 - 904 - 905	901 with "transfer" key
The initiator station releases.	In this case, the call is transferred. The external correspondent is connected with the internal enquiry call called party.	
The initiator cancels the enquiry call to return to the external correspondent.	Press the "TRANSFER" key. The associated LED goes off. On station 904 or 905, the called station number is replaced with EXT. call duration or charge units. In this case, the enquiry call called station receives the busy tone.	
The external correspondent releases.	When the initiator switches back to the external correspondent, the initiator and called party receive the busy tone, inviting them to release. (See remark 1).	
The enquiry call called party releases. The initiator must return to the external correspondent. (See remark 2).	Press the "TRANSFER" key. On station 904 or 905, EXT. call duration, charge units are displayed again. The LED associated with the "TRANSFER" key goes off.	

3.6 Enquiry call cancellation on station without transfer key

	901 without "TRANSFER" key	SINGLE LINE STATION	
		DEC. SDC	DTMF
The initiator station releases.	The call is transferred. The external correspondent is engaged with the enquiry call called station.		
The initiator cancels the enquiry call to return to the external correspondent.	Dial 1, wait for the busy tone, then dial 2.	Press the flash button, then dial 2.	
	The engaged call called station receives the busy tone.		
The external correspondent releases.	When the initiator switches back to the external correspondent, the initiator and called party receive the busy tone, inviting them to release. (See remark 1).		
The enquiry call called party releases.	Dial 1.	Press the flash button.	

Remarks:

- 1) When the system detects a release signal (battery reversal), the enquiry call is cancelled and the two internal stations are then engaged in an internal call.
- 2) If the initiator releases instead of returning to his external correspondent, he receives a procedure error recall, and must pick up the call.

3.7 Back and forth procedure

The initial position before this procedure is **ENQUIRY CALL**.

The external correspondent is held, and the initiator is engaged in an internal conversation with the enquiry call called party (internal station).

TO RETURN TO CONVERSATION WITH THE EXTERNAL CORRESPONDENT		
MULTILINE STATIONS	SINGLE LINE STATIONS	
	DEC ADIC	DTMF
Press key "F".	Dial 1 then wait for the dial tone, dial 1.	Press the flash button, then wait for the dial tone, dial 1.
The internal station receives the hold signal in turn. From this position, the initiator can switch from one correspondent to the other.		

Remarks:

- In the case of a station fitted with an "INTERNAL REPLY" key:
- the associated LED is on for internal calls,
 - the associated LED is off for external calls.

Back and forth cancellation

Cancellation can be obtained in two different ways:

- By enquiry call cancellation (see Section 3.5).

In this case, the initiator returns to his conversation with the external correspondent.

- By call transfer.

If the initiator releases (by going on-hook or other procedure) during the back and forth procedure, the call is transferred.

3.8 Call transfer

The initial position before the transfer is "ENQUIRY CALL". The external correspondent is held. The initiator has dialled the required internal station number. The call can then be transferred in three ways:

- to a station receiving the ring signal,
- to a busy station,
- after called party reply.

INITIATOR STATION ANY TYPE OF STATION	
Transfer to a station receiving the ring signal	The called station fails to reply, the initiator receives the ring-back tone and releases his station (by going on-hook or other procedures). The trunk line is automatically transferred, in the incoming call position, to the internal station requested, provided the category of the latter is compatible with the transfer. The external correspondent receives the ring-back tone. In the case of a station fitted with the "TRANSFER" key, the associated LED goes off.
Called station no reply	If the called party has not replied to the transferred call within a delay (programmable), the trunk line is then redistributed to the operator station(s). Caution: The transfer initiator cannot reobtain a line which he has transferred.
Transfer to busy station	The called station is busy. The enquiry call initiator receives a specific ring-back tone, or busy tone (slow cadence). He releases his station by going on-hook or other procedures. The trunk line is automatically transferred. The external correspondent continues to receive the hold tone or hold music. In the case of a station fitted with the "TRANSFER" key, the associated LED goes off. The LED corresponding to the transferred line goes off on the initiator station, provided that this line is not personalized.
Transfer to unobtainable or unauthorized station	"X" is shown on station 904 or 905 display. The initiator must return to the external correspondent. All the same if transfer is requested, the initiator receives a procedure error ring back tone. If he fails to reply, the line is then redistributed to the operator station(s) after a delay.
Transfer after reply	The initiator is in conversation with one or other of his two correspondents. He releases or goes on-hook. The external correspondent is automatically connected with the internal correspondent.

- "TRANSFER" signalling on destination station:

DESTINATION STATION ANY TYPE OF STATION	
Transfer to a station receiving the ring signal	Signalling is identical to that used for an incoming call. On a multiline station, the LED corresponding to the transferred line flashes intermittently. On station 904 or 905 display, the number of the initiator station is cleared when transfer is executed.
Transfer to busy station	MULTILINE STATION
	SINGLE LINE STATION
Transfer to unobtainable or unauthorized station	Reception of an audio signal sent regularly to the station.
	Reception of a brief audio signal (not repeated).
Transfer after reply	The LED corresponding to the transferred line flashes intermittently.
	No specific signalling.
Signalling is identical to that used for external calls.	

3.9 Procedure error recall

If the transfer initiator makes a procedure error (wrong number, etc.) during a trunk call transfer to a station receiving the ring signal, his station is rung again for call reconnection with the external correspondent.

3.10 Conference (One external and two internal correspondents)

NOTE: Conference between one internal and two external correspondents is available, but authorization to use it depends on the law in the concerned country.

The initial position before this procedure is "ENQUIRY CALL", followed by back and forth function or not.

Conditions required:

- The initiator of the enquiry call can be in conversation with one or other of his two correspondents, both of whom must remain on the line.

3.10.1 Establishment of a conference call

903-904 905	901-902 with programmed conference key	901-902 without programmed conference key	SINGLE LINE STATION	
			DEC ADIC	DTMF
Press the "CONFERENCE" key.		Dial 1, wait for the dial tone, then dial 3.	Dial 1, wait for the dial tone, then dial 3.	Press the flash button, wait for the dial tone, then dial 3.
Signalling on initiator station: The "CONFERENCE" LED flashes slowly. The "TRANSFER" LED goes off.				6 (DTMF 16K station: press key C.)
On station 904 or 905, display indicates internal station number, EXT. call duration, number of charge units.				
Signalling on participating internal station: The "CONFERENCE" LED is on steady on station fitted with "CONFERENCE" key. Station 904 or 905 display shows: - left part = number of initiator station - right part = two opposed arrows → ←				
No specific signalling on single line stations.				

3.10.2 Conference call cancellation

	903 904 905	901-902 with conference key	901-902 without conference key	SINGLE LINE STATION	
				DECADE	DTMF
The initiator cancels the enquiry call and returns to the station.	Press the "CONFERENCE" key. The "CONFERENCE" LED goes off.		Dial 1.		Press the flash button.
	The internal correspondent receives the busy tone.				
The external correspondent receives the busy tone.	Both internal correspondents receive the trunk line busy tone. Note: If the system detects a battery reversal, the conference is cancelled. Both internal correspondents are then engaged in an internal call.				
Withdrawal of one of the two internal stations.	Conference cancellation. The other internal station remains connected to the external correspondent. Signalling is as for a trunk call.				

Feature particularities

- After outward dialling, the initiator can establish a conference call with a station the category of which does not allow transfer of a call. (I/C only). If he has a station 904 or 905, the sign "X" appears on the right end of his display. In this case, if the conference call initiator releases, the conference is cancelled, and the non-authorized station receives the busy tone. The initiator receives a procedure error ring-back tone, and must then pick up the trunk line.
- The called station for an enquiry call is a station 901 or 902 declared as multiline:
 - If the initiator has a station 904 or 905, his display tells him that his correspondent is on a station 901 or 902 (the sign "I" on the right end of his display).
 - The conference call with stations 901 or 902 can only be executed if the user is engaged in a conversation with the initiator (after going off-hook and depressing the internal reply key). Otherwise, the procedure is not accepted on the initiator station.

3.11 Station availability

- The initiator of an enquiry call, back and forth or conference call, can only execute procedures relating to these features.
He is also entitled to execute procedures concerning the handsfree mode, and group listening or microphone privacy functions.
- An internal user receiving an enquiry call, back and forth or conference call, can only execute procedures relating to the handsfree mode, and group listening or microphone privacy functions.

3.12 Procedure restrictions

a) Enquiry call

- In the case of an incoming call transferred by a station, or reconnection after hold, an enquiry call is only possible after a programmable delay following reply or reconnection.
- For all stations, the line seized for an outgoing call can only receive an enquiry call after the speech phase has started (end of delay).
- An enquiry call cannot be made to a station in course of programming, or in the "DO NOT DISTURB" position (see Note).
- Automatic connection (intercom) is not possible to a multiline station to which an enquiry call has been made.
- For a multiline station, fitted with the "INTERNAL REPLY" key, reply to an enquiry call can only be made by depressing this key.
- When making an enquiry call, the initiator cannot:
 - leave a message on the station called,
 - make a busy station automatic callback request, if the called party is busy,
 - make an announcement over the speaker of a multiline station.

b) Transfer

- A transfer is not possible if the destination station does not have a trunk direction key, or if the line concerned is not personalized on the destination station.
- A call cannot be transferred to a station:
 - not authorized by its category to receive a transfer,
 - selected in the "DO NOT DISTURB" position (see note in following chapter),
 - in first degree busy state,
 - in course of programming (multiline station),
 - in the line lockout state (single line station).

c) Three-party conference

A three-party conference cannot be established if the called station:

- does not reply to the enquiry call,
- is no longer on the line.

Remark:

Only an operator station can make an enquiry call to a station in the "DO NOT DISTURB" position, and transfer a call, or establish a three-party conference with such a station.

4 CALL HOLD

4.1 General

- All stations of a system have access to this feature.
- A user in conversation with an external correspondent, can place his correspondent on hold, and pick up the call again later.
- A multiline station can place a number of trunks on hold.
- A single line station user can only place one line on hold.
- Hold monitoring is not provided on stations 901 and 902.

4.2 Hold procedure

903 - 904 905	901 - 902 with programmed "hold" key	901 - 902 without "hold" key	SINGLE LINE STATION
Depress the "HOLD" key. The LED associated with the line flashes fast.	The initial position before a hold procedure is "ENQUIRY CALL".	Dial prefix 11: The user receives a modulated procedure acceptance tone, followed by the hold signal. The external correspondent receives the hold signal (music on-hold). Note: Each time the initiator station picks up, he receives the hold signal.	
Station 904 or 905 display is cleared.			
The external correspondent receives the hold signal (music on-hold).			
<ul style="list-style-type: none"> - The signalling state for the line on hold remains unchanged on multiline stations. - The initiator station is considered to be in the idle state, and can then handle any type of authorized call. 			

Remark relating to single line station or station declared as "single line":

The user cannot place more than one line on hold. If he attempts to place another line on hold, he receives the busy tone, and must pick up the line (see enquiry call cancellation).

4.3 Reconnection after hold

903 - 904 905	901 - 902 with line key	901 - 902 without line key	SINGLE LINE STATION
To pick up the line on hold: - depress the key corresponding to the line (LED flashing).	After going off-hook dial prefix 11		
After delay - Intermittent flashing of the LED if the station is in the multiline mode. - Recall of the station (if free).	After delay - Recall the station.		
Transmission of a short audio beep if the station is busy and not protected. When the user releases, his station is rung again: if the call is not picked up after a new delay, the line is rerouted to the operator station(s), and the station is no longer rung.			

Remark:

In the case of a station 901 or 902 declared as "single line", and equipped with a programmed "HOLD" key, reconnection is performed by depressing the "HOLD" key.

4.4 Procedure restrictions

- On incoming call seizure or reconnection after hold, the user cannot make an enquiry call, or place another call on hold, before the end of a delay (programmable).
- Under no circumstances it is possible:
 - to place on hold a line waiting for a tone signal.
 - to place on hold a line receiving the dial tone.
 - to place more than one line on hold on a single line station.
 - to forward calls if one or more lines are on hold on the station concerned.
 - to place an internal call on hold.

5 AUTOMATIC HOLD

5.1 General

- This facility is only available to stations:
 - 903, 904, 905 (multiline stations).
 - 901, 902 declared as multiline, fitted with programmed "HOLD" key or not.
- The user can place one or more trunk lines on automatic hold on his station.
- The hold function is reciprocal, namely a trunk line engaged in a conversation is automatically held when the user picks up another line on hold on his station. The user can thus switch from one external correspondent to another, as many times as he wishes.

5.2 Procedure

This feature is identical to normal call hold, apart from the following differences:

- The user is always engaged in a call.
- Instead of using the "HOLD" key, the user can execute the following to cause the line to be automatically placed on hold:
 - pick up the trunk line on hold (line or trunk direction key).
 - reply to a transferred trunk line (line or trunk direction key).
 - execute a DOD seizure (line or trunk direction key).
 - reply to a PCR incoming trunk call (line key).
 - reply to an internal or enquiry call ("INTERNAL REPLY" key).
 - reply to a filtered call (programmed key).

Remark:

None of the above procedures are accepted, when the trunk line concerned is receiving or waiting for the dial tone.

5.3 Procedure restrictions

- Stations 901-902 declared as single line, and single line stations do not have access to this feature.
- It is not possible under any circumstances:
 - to place a line receiving or waiting for the dial tone on hold.
 - to place an internal call on automatic hold.
 - to forward calls if one or more lines are on the station.

6 SYSTEM HOLD

6.1 General

- Only multiline stations programmed for the multiline mode have access to this feature.
- The "SYSTEM HOLD" is used on an external call (outgoing or incoming), for placing a line on hold on all stations belonging to the system, and fitted with a personalizing key for this line. The call can be picked up from any station equipped with this line key.
- This feature requires a programmed "SYSTEM HOLD" key on the station or the associated add-on module (see DE manual, program B41 or B58).

6.2 Procedure

- The user is engaged in a call with an external correspondent.

PROCEDURE	SIGNALING AND COMMENT
Depress the "SYSTEM HOLD" key.	The "SYSTEM HOLD" LED is off. The external correspondent receives the music on-hold. The LED corresponding to the line flashes on stations fitted with a personalizing key for this line, the line is in the system hold state.
Depress the key corresponding to this line.	The line LED is on steady. The call is established.

6.3 Procedure restrictions

- Single line or multiline station declared as single line do not have access to this feature.
- It is not possible, under any circumstances:
 - to place a line receiving or waiting for the dial tone on hold,
 - to place an internal call on system hold.

7 CONSULTATION HOLD

7.1 General

- All stations have access to this feature.
- When a trunk line is transferred to a busy station, the user of the busy station receives a short beep (512 ms), which is not repeated. On a multiline station, the LED corresponding to the transferred line flashes intermittently.
- A station category provides protection against the hold signal (see Data Entry manual, program B21).

7.2 Procedure

This feature differs according to the type of current call, and the type of station used.

7.2.1 User engaged in a trunk call

After receiving the "beep", the user can proceed in one of two ways:

a) He can consult the call on hold, and then return to his initial correspondent.

901-902 Decoded as multiline	903 904 905	902 Single line	901 Single line	SINGLE LINE STATION	
				DECADIC	DTMF
Depress the key for the transferred line (LED flashing). In this case, an automatic hold procedure is performed.		Depress the "TRANSFER" key, then dial pre-fix 14.	Dial 2, then 14.	Press the flash button, wait for the tone, then dial 14.	
The user is then in conversation with the new correspondent, and the initial correspondent receives the tone or music on-hold.					
To return to the initial correspondent, the user must complete his call (transfer or release). The user is then in the normal hold position.					

b) The current call is not picked up after consultation:

In this case, the user terminates his current conversation (transfer or release), and the station is recalled when it reverts to the idle state.

The user is then in the incoming trunk call (LED flashing intermittently).

7.2.2 User engaged in an internal call

The internal correspondent cannot be placed on hold, and picked up subsequently. Consequently the user must proceed as indicated above.

Remarks:

- If no reply is made to the call on hold after a delay (programmable), the trunk line is rerouted to the operator stations.
- A protected station, or a station engaged in data transmission, does not receive the hold warning beep.

8 TRUNK LINE PARK

8.1 General

- With the parking function, a trunk line can be placed on hold for the system, rather than with respect to a given station, and can then be picked up from any station in the system.

This feature is accessible to any type of station, both for parking and picking up the line.

A user who has executed a parking procedure on a station other than his own, must remember the directory number of this station; he will need it to obtain reconnection of the parked call.

8.2 Line park

The procedure differs according to the type of station used.

902-903 904-905	901 with programmed "park" key	901 without programmed "park" key	SINGLE LINE STATION
On an external call: depress the "PARK" key. A modulated acceptance tone is received. The user can release (by going on-hook or other procedure). The LED for the line concerned goes off in the case of a trunk direction (free), or stays on steady for a personalized line. On station 904 or 905, the display is cleared.			
The initial position is enquiry call. Dial 12: a modulated acceptance tone is received. At the end of the acceptance tone, and after receiving the dial tone, the user can hang up or establish another call.			
Signalling remains unchanged on the other multiline stations. The external correspondent receives the tone or music on-hold.			

Remark:

When a parking procedure is not accepted, the user receives a busy tone, and must return to his external correspondent (see "enquiry call cancellation").

Station availability

After executing the parking procedure, the user has access to all features available to his station before the procedure.

8.4 Parked line reconnection

- To pick up his external correspondent, from his own station or any other station in the system, before the end of a delay (programmable), the user must proceed as follows:

902-903 904-905	901 with programmed "park" key	901 without programmed "park" key	SINGLE LINE STATION
Depress the "PARK" key, then dial the number of the station on which the parking procedure was executed.		After picking up, the user dials 12, followed by the number of the station on which the parking procedure was executed.	
NOTE: From a station 901 or 902, this procedure must be executed with the handset off-hook.			
After executing this procedure, the user is in conversation with the external correspondent. Signalling on the multiline stations is as for a trunk call.			

8.5 Feature particularities

A user can park a number of trunk lines from the same station. These lines can be picked up at random.

8.6 Parking cancellation

- Reconnection of parked line.
- If reconnection is not made within a delay (programmable), the parked line is rerouted to the operator station(s).

8.7 Procedure restrictions

- Reconnection of a parked line cannot be obtained using a direct call key (add-on module or programmed key).
- The parking procedure is inoperative or is not accepted in the following cases:
 - line awaiting tone,
 - line receiving dial tone,
 - line on hold on a station (normal or automatic hold),
 - internal call,
 - if the system limits are reached.

8.8 Limits

- Max. number of parked calls on the same station: = 8
- Number of simultaneous parked calls in the system: = 8.

9 OPERATOR STATION FACILITIES

9.1 Operator station recall

When an operator station picks up a rerouted trunk line, following a station procedure error, non-reconnection of a held call, station control, etc., the number of the last station concerned appears in brackets on the operator station display. Example: (205), therefore a redistribution is possible without having to reconsult the external correspondent.

Remark:

In the case of an operator recall, following non-reconnection of a parked call, no number is displayed.

9.2 Trunk direction 9 reservation

9.2.1 General

- A trunk line level data item provides this feature (see DE manual, program B50).
- Only lines declared in trunk circuit group 9 can be reserved.
- An operator station can bar (or authorize) DOD on these lines at will, to any (authorized) user station, by programming.
- This procedure can only be executed on an operator station in the idle state (see DE, program B23).

9.2.2 Procedure

When an operator station executes the reservation procedure:

- The letter R appears on the display of the operator station(s).
- The reserved lines are marked "BUSY" on all user stations on which they are personalized (corresponding LEDs on steady).

Remarks:

- Only an operator station can use these lines for outgoing calls.
- Incoming traffic on these lines is unaffected.
- A multiline station can make a busy trunk direction automatic callback request (if so authorized) on a personalized and reserved line. Station callback is not possible as long as this line is reserved.

9.2.3 Reservation cancellation

- When an operator station cancels the reservation, the lines concerned are again accessible to any authorized user station for outgoing calls.
- The letter R is cleared on the display of the operator station(s).

10 TRUNK BARRING

10.1 General

- In a system, the barring function authorizes or prohibits access to certain CO directions for a station, according to the category of the latter.
- Barring can be applied to LOCAL, NATIONAL, or INTERNATIONAL directions (LOC, NAT, INT).
- Lines declared private, and collective speed dialling are not subject to barring.

NOTE: x = authorized

- x(1) = subject to barring for scanning of dig its sent to central office.
- x(2) = access to the first 20 CSD numbers for the room stations.
- access to all CSD numbers of stations.

- Class 5 relates to the voice message ser
- Class 6 is used for data communication.
- Class 7 does not have access to direct O/G traffic
- Assignment (or modification) of these classes of service to the stations, is conducted from an operator station (see DE manual, program B21).

10.2 Station category

- Each station is assigned to a class of service, and has the capabilities associated with this class.
- The system provides for eight classes:
 - 0 = SAE : Incoming call CO lines only.
 - 1 = PDR1 : Restricted DOD 1.
 - 2 = PDR2 : Restricted DOD 2.
 - 3 = PDL : Unrestricted DOD.
 - 4 = PSC : Access to trunk lines via the operator station only.
 - 5 = RSVP : Voice message service (option, depending on the country concerned).
 - 6 = MODEM: Data communication.
 - 7 = Cabin station
- The accesses for classes of services 0 to 4 are:

FEATURE	CLASS OF SERVICE				
	SAE	PDR1	PDR2	PDL	PSC
Incoming call	X	X	X	X	X
Outgoing call to CO trunk direction		X(1)	X(1)	X	
Outgoing call to private trunk direction		X	X	X	X
Collective speed dialling		X	X	X	X(2)
Personal speed dialling		X(1)	X(1)	X	
Operator-transferred outgoing call		X	X	X	X
Authorized station-transferred O/G call		X	X	X	X

10.3 Barring table

- The memory space reserved for the barring function is represented by tables, in which the access prefixes and barred numbers are loaded and stored.
- Access to these tables requires a system password (see DE manual, programs B43, B47 and B49).

10.3.1 Prefix table (B49)

- This table can store a certain number of access prefixes, determining the type of call (LOC, NAT, INT) (see DE manual, program B49).
- Each prefix can have up to a maximum of 10 digits (including any intermediate tones).
- Any number not included in this table is considered to be LOCAL.

10.3.2 Barred number table (B43)

- This table is used for storing numbers (or directions) declared LOC, NAT or INT. Each number can have up to 10 digits (including any intermediate tones) (see DE manual, program B43).
- These numbers can be authorized or barred respectively, for the PDR1 and PDR2 categories.

10.3.3 Dialling format (B47)

- A maximal and minimal format is assigned to each type of call (LOC, NAT and INT).
- For an authorized outgoing call, if specific procedures subsequently executed by the user cause the CO to return to the dial tone position, the system is not able to initiate a new barring function. However, counting of the number of digits dialled bars from establishing a new call.

10.4 Barring mode

- A barring mode is assigned to each class (PDR1, PDR2), for each type of call (LOC, NAT and INT).
- The system provides for four modes:
 - 000: All barred.
 - 001: Numbers contained in the table are all barred, those not included in the table are systematically authorized.
 - 002: Numbers contained in the table must be authorized, those not included in the table are systematically barred.
 - 003: All authorized.
- For mode 000 and 003 only, global barring or authorization can be applied to a type of call for a given category, without the need to enter specific numbers.
- For modes 001 and 002, numbers which are authorized or barred for the category concerned, must be entered.

10.5 Use

- Stations with a restricted class (PDR1 and PDR2) have their dialling to the CO monitored by the barring function.
- A user who dials a number for which he does not have access entitlement, obtains a busy tone from the system, and the line concerned is released.

10.5.1 Example of use

- The example corresponds to a system, located in Paris, and programmed as follows:
- prefix table containing:
 - 16 (national).
 - 19 (international).
 - Barred number table containing:
 - 16 TON.6 - national number, declared authorized for PDR1.

- 16 TON.7 - national number, declared authorized for PDR1.
- 16 TON.8 - national number, declared authorized for PDR1.
- 6 - local number, declared barred for PDR2.
- Barring mode:
 - PDR1 - LOC = 003 (all authorized).
 - PDR1 - NAT = 002 (numbers in table authorized).
 - PDR1 - INT = 000 (all barred).
 - PDR2 - LOC = 001 (numbers in table barred).
 - PDR2 - NAT = 000 (all barred).
 - PDR2 - INT = 000 (all barred).
- Station A with PDR1 class.
- Station B with PDR2 class.
- a) If station A dials:
 - 19, it receives the busy tone, as it is not entitled to make international calls.
 - 16, the system waits for the remainder of the numbers to be dialled, to analyze the next digit. Only digits in the table (6-7-8) make it possible to continue to dial.
 - Any number not starting with 16 or 19, is considered by the system as a local number, and therefore authorized for this station.
- b) If station B dials:
 - 19, it receives the busy tone, as it is not entitled to make international calls.
 - 16, it receives the busy tone, as it is not entitled to make national calls.
 - 6, it receives the busy tone, as this direction (local) is not authorized for the station.
 - Any number not starting with 19, 16 or 6, and which does not appear in the tables, is authorized for this station (number considered to be local).

10.6 Feature particularities

- Collective speed dialling is not subject to barring.

Example:

A DOD restricted station does not have access to international numbers, but can obtain a correspondent in another country by using the collective speed dialling (CSD) function.

- An I/C only station does not have access to the collective speed dialling function, as it cannot make outgoing calls, even on a private line.
- Personal speed dialling (PSD) is subject to barring for transmission. If the user enters an unauthorized number, this number will be refused when its use is attempted.
- An outgoing call parked by one station, can be picked up by a station with outward restriction or authorized to make O/G calls via the operator.

10.7 Procedure restrictions

- The following can be barred:
 - DOD: international, national and certain local numbers.
 - Any outward dialling, even on a line declared private, by assigning the outward restriction to the stations concerned.
- The following cannot be barred:
 - local dialling.
 - dialling on lines declared private.

10.8 Limits

- A station belongs to one class of service only out of five.
- Maximum table capacities: see Data Entry manual.
- The table contains numbers which are authorized or barred for PDR1 and PDR2 categories.