

ALCATEL 4740

**Managing your voice
communication
system**

Alcatel 4400 voice communication system offers a full set of services: groupware, mobility, networking, and communication applications serving you business.

Your success depends on the quality of your communications. Management applications are essential in helping you to adapt and optimize your day-to-day telecom resources for your needs.



The Alcatel 4740 manages both the Alcatel 4400 and 4200 communication systems, and their applications.

Simple to install and use, the Alcatel 4740 applications share the resources of a single PC. All the modules are built with a Windows Graphical User Interface.

Alcatel 4740 applications simplify daily management of your communication system. They enable you to control communication costs and to measure service quality. Finally, they detect incidents so that your maintenance centre can be informed quickly and react accordingly.



Alcatel 4740 applications

The Alcatel 4740 puts an end to the need for the tedious consultation of listings; you concentrate on the information you require.

The precise monitoring of the communication costs and service quality allows you to make significant savings.

Configuration

- You easily and quickly modify user parameters such as the class of services or access rights to the public network.
- You can also assign new services such as call forwarding or automatic call-back. "Predefined profiles" make it easier for you to program the keys on your Alcatel Reflex telephones according to the needs of each user: manager, secretary or member of working group.
- A grid edit feature allows you to prepare off line modifications of sets of parameters.

Cost control

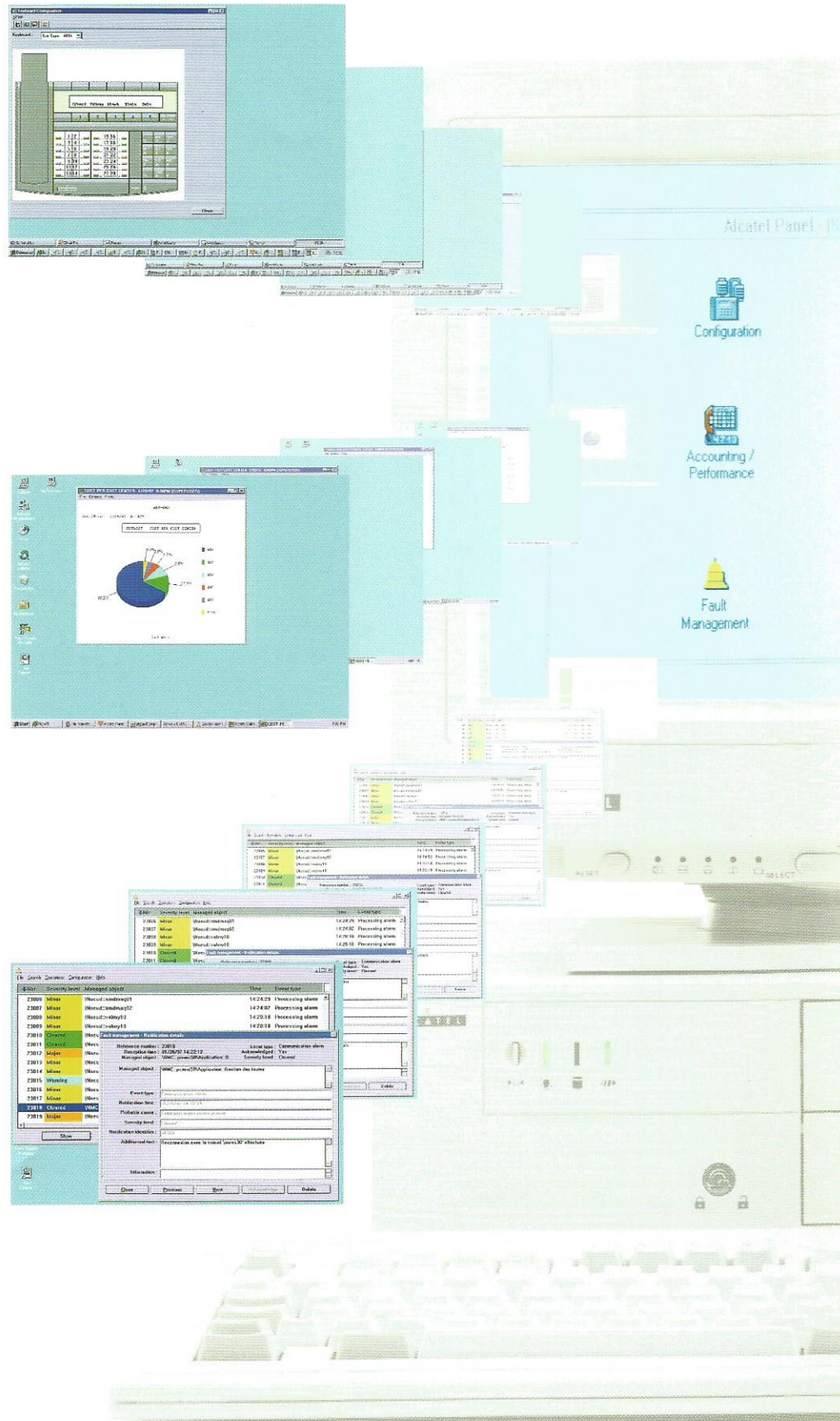
The billing application allows you to control the cost of calls.

You can:

- Draw up the "Top Ten" of calls per user or cost center.
- Monitor Operator billing including ISDN supplementary services.
- Monitor costs to be assigned to specific projects.
- Manage your telecom bill in multi-carrier environment. Simulations on cost savings are also possible.

Predefined or customized reports assist you in accurately dimensioning the system.

You lose fewer calls and avoid unnecessary subscriptions.





Fault management

Color coding for incident severity levels facilitates fast detection and immediate action.

A simple double click on an alarm of the list will allow you to see the alarm details.

Performance management

Performance management allows you to dimension the system or the network so as to provide an optimum service quality, for example:

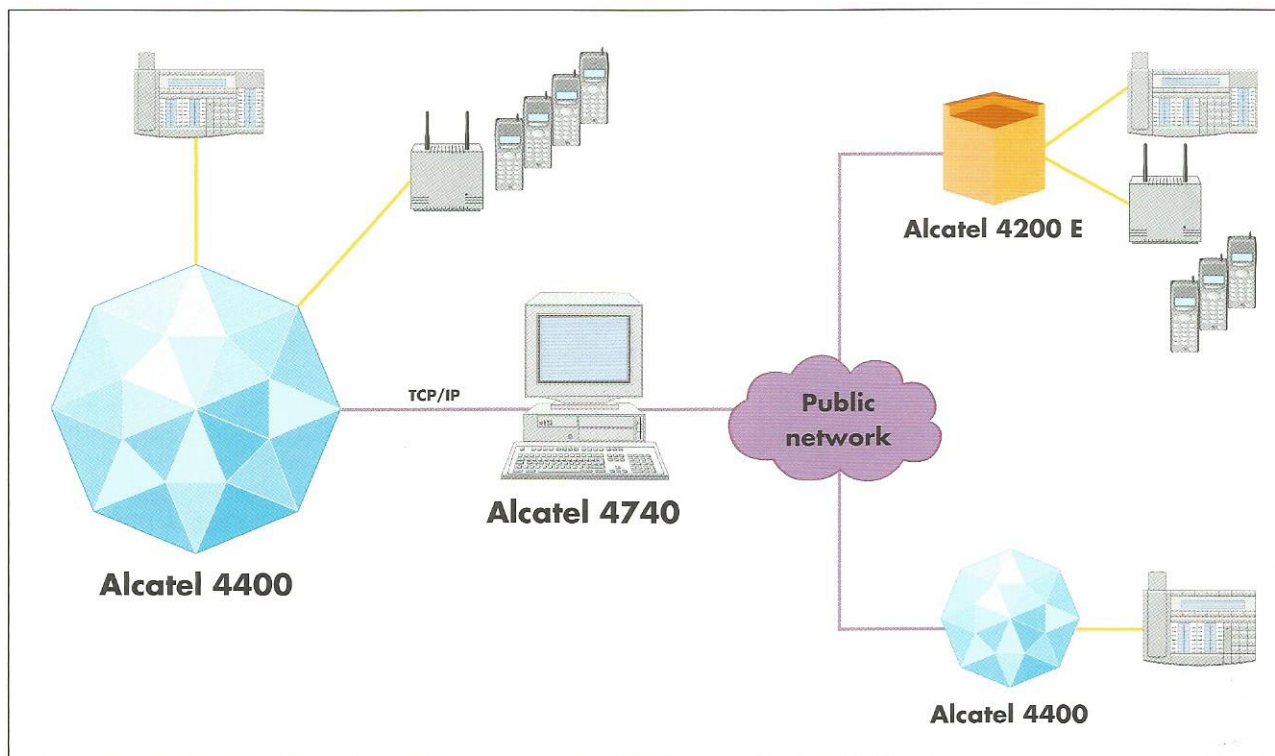
- Measure the response time.
- Measure the line occupancy ratio for incoming calls.
- Measure the operators and subscribers traffic.
- Measure the DECT traffic (e.g. number of handovers per base station, per set).

Security Management

Management applications is strategic and the access to the applications must be regulated. It is done through:

- User authentication (Alcatel Panel).
- Limited access to data base domains (e.g. accounting limited to specific cost centers).
- Limited access to configuration
- Masking of confidential information.

The Alcatel 4740 forms part of the complete and consistent management products range offered by Alcatel. This solution includes all the tools, technologies and services you need, ensuring openness, and thus protecting your investment.



The Alcatel 4740 can manage one or several Alcatel 4400s (networked or not), and Alcatel 4200s. With Alcatel 4740, you can manage centrally your Alcatel 4400 and 4200 and provide a common reporting for instance on call charging. Management can be achieved either locally or remotely.

Configuration

Sample of configuration:
1 Alcatel 4400 with several hundred subscribers and
3 Alcatel 4200 with several dozens of subscribers.
For specific requirements or maximum configurations, please contact your local installer-consultant.

Database

All data is stored in an SQL database. Data may be imported from or exported to spreadsheets.

Protocols used

- TCP/IP CMIP/CMISE.
- FTP.

Connectivity

- Ethernet.
- V.24/SIIP.

Station characteristics

Standard configuration is based on pentium PC and runs with the MS-Windows Graphical User Interface.

